



Product Line Laying Materials

Effective from 4/2024

WAKOL®
Anspruch verbindet

Wakol GmbH
Bottenbacher Straße 30
D-66954 Pirmasens
Tel. +49 6331 8001 131
Fax +49 6331 8001 890
www.wakol.com



Wakol GmbH
Industriestraße 5
A-6841 Mäder
Tel. +43 5523 64 700
Fax +43 5523 64 700 64
www.wakol.at

Wakol Foreco srl
Via Kennedy 75
I-20010 Marcallo con Casone (MI)
Tel. +39 02 9761 939
Fax +39 02 9725 3021
www.wakolforeco.it

Loba-Wakol, LLC
2732 Hwy 74 West
Wadesboro, NC 28170, USA
Tel. +1 800 230 6456
Fax +1 704 527 5922
www.loba-wakol.com

Lecol Chemie B.V.
Schutweg 6
NL-5145 NP Waalwijk
Tel. +31 416 566 540
Fax +31 416 566 531
www.lecol.nl

Wakol Adhesa AG/SA
Schützengasse 28
CH-9410 Heiden
Tel. +41 31 9210 755
Fax +41 31 9212 968
www.wakoladhesa.ch

Loba-Wakol Polska Sp. z o.o.
ul. Sławęcińska 16, Macierzysz
PL-05-850 Ożarów Mazowiecki
Tel. +48 22 436 24 20
Fax +48 22 436 24 21
www.loba-wakol.pl

Loba GmbH & Co. KG
Leonberger Straße 56-62
D-71254 Ditzingen
Tel. +49 7156 357 220
Fax +49 7156 357 221
www.loba.de

PREPARING	4	
LEVELLING	8	
BONDING ELASTIC FLOORING	15	
BONDING LINOLEUM / TEXTILE FLOORING	22	
BONDING PARQUET / CORK FLOORING	26	
FIXING FLOORING	34	
LAYING CONDUCTIVE FLOORING	35	
UNDERLAYS / MATS / TILES	37	
TOOLS / ACCESSORIES	45	
WORKING CLOTHES / EQUIPMENT	55	
TROWEL NOTCH SIZES	57	
TABLES FOR INSTALLATION	58	
SYMBOLS / EXPLANATIONS	72	

Please always observe the Technical Information before processing.

WAKOL MS 330 Silane Primer



Area of application:

Ready-to-use 1-component MS primer for priming absorbent and non-absorbent subfloors, and to reinforce abraded resp. sanded concrete edges. Also for blocking higher residual humidity up to max. 5 CM% / 95 corresponding RH % in cement screeds without floor heating, up to max. 3 CM% / 85 corresponding RH % with floor heating, as well as up to max. 7 % by weight / 95 corresponding RH % without floor heating in concrete before laying Wakol MS Adhesives.

Application method:

as primer with WAKOL Primer Roller or velour roller, as moisture barrier with WAKOL MS Special Roller or trowel notch size according to TKB A2

Consumption:

approx. 80-120 g/m² as primer, approx. 250 g/m² as moisture barrier

Drying time:

approx. 60 minutes

Storage information:

not sensitive to frost

Base:

MS polymer

Order information:

361403 | 35284 – 10.0 kg – pallet: 60 pieces
361404 | 35283 – 5.0 kg – pallet: 96 pieces



WAKOL D 3080 Dispersion Moisture Barrier



Area of application:

Dispersion primer for blocking higher residual humidity up to 5 CM% / 95 corresponding RH % in cement screeds without floor heating, up to max. 3 CM% / 85 corresponding RH % with floor heating before subsequent levelling with cement-based Wakol levelling compounds indoors.

Application method:

WAKOL Primer roller or short haired velour roller

Consumption:

1st application 60-75 g/m² 1:1 diluted,
2nd application 100-120 g/m² undiluted

Drying time:

1st application at least 30 minutes,
2nd application at least 120 minutes

Storage information:

not below +5 °C, sensitive to frost

Base:

polymer dispersion

Blue Angel:

DE-UZ 113

Order information:

308005 | 35888 – 11.0 kg – pallet: 60 pieces



WAKOL PU 280 Polyurethane Primer



Area of application:

Ready-to-use 1-component polyurethane primer for priming absorbent and non-absorbent subfloors, and to reinforce abraded resp. sanded concrete edges. Also for capillary ascending humidity and higher residual humidity up to 6 CM % / 98 corresponding RH % in cement screeds without floor heating, on heated cement screeds up to max. 3 CM% / 85 corresponding RH % as well as on concrete up to max. 7,5% by weight / 98 corresponding RH %; applicable as moisture barrier on unheated cement screeds and concretes without prior moisture measurement.

Application method:

WAKOL Primer Roller or short haired velour roller

Consumption:

approx. 100-150 g/m² as primer, approx. 250-350 g/m² as moisture barrier

Drying time:

approx. 40-50 minutes

Storage information:

not below +5 °C, store in a cool place

Base:

polyurethane resin

Order information:

364003 | 35179 – 11.0 kg – pallet: 60 pieces
364004 | 35178 – 5.0 kg – pallet: 96 pieces



WAKOL D 3055 Parquet Primer



Area of application:

Ready-to-use dispersion-based primer for priming absorbent cement- and calcium sulphate concrete as well as gypsum fibre boards before subsequent laying of parquet with Wakol parquet adhesives indoors.

Application method:

WAKOL Primer Roller or velour roller

Consumption:

approx. 100-150 g/m²

Drying time:

on cement screeds following visible drying approx. 30 minutes, on calcium sulphate concrete and gypsum fibre boards after approx. 2 hours

Storage information:

not below +5 °C, sensitive to frost

Base:

polyurethane dispersion

Order information:

305505 | 35892 – 10.0 kg – pallet: 60 pieces
305506 | 36071 – 5.0 kg – pallet: 96 pieces



WAKOL PU 235 Polyurethane Primer



Area of application:

Ready-to-use 1-component polyurethane primer for priming absorbent and non-absorbent subfloors, and to reinforce abraded resp. sanded concrete edges. Also for capillary ascending humidity and higher residual humidity up to 6 CM % / 98 corresponding RH % in cement screeds without floor heating, on heated cement screeds up to max. 3 CM% / 85 corresponding RH % as well as on concrete up to max. 7,5% by weight / 98 corresponding RH %.

Application method:

WAKOL Primer Roller or short haired velour roller

Consumption:

approx. 100-150 g/m² as primer, approx. 250-350 g/m² as moisture barrier

Drying time:

approx. 4-6 hours

Storage information:

not below +5 °C, store in a cool place

Base:

polyurethane resin

Order information:

364103 | 35188 – 11.0 kg – pallet: 60 pieces



WAKOL D 3045 Special Primer



Area of application:

Ready-to-use dispersion-based primer to use as an adhesive bridge for Wakol levelling compounds on WAKOL PU 280 Polyurethane Primer, WAKOL PU 235 Polyurethane Primer or WAKOL MS 330 Silane Primer, cast asphalt and wooden material tiles, old waterproof adhesive residues as well as thoroughly cleaned ceramic tiles, natural stone flooring and terrazzo indoors.

Application method:

WAKOL Primer Roller or velour roller

Consumption:

approx. 100-150 g/m²

Drying time:

approx. 30-60 minutes, approx. 60-120 minutes on wooden material tiles

Storage information:

not below +5°C, sensitive to frost

Base:

acrylate dispersion

Order information:

304505 | 38507 – 12.0 kg – pallet: 40 pieces
304506 | 36070 – 6.0 kg – pallet: 80 pieces



WAKOL D 3004 Primer Concentrate



Area of application:

Dispersion-based primer concentrate for priming cement screed, calcium sulphate screed, cast asphalt screed, magnesite screed (with exclusively mineral-based additives), concrete, tiles, terrazzo, water resistant adhesive residues, wood planks, wooden material tiles, gypsum fibre boards as well as Wakol levelling and filling compounds before subsequent levelling indoors.

Application method:

WAKOL Primer Roller or velour roller

Consumption:

approx. 40-50 g/m² concentrate for diluted application, approx. 80-120 g/m² for undiluted application

Drying time:

on cement screeds and concrete following visible drying; on cast asphalt, tiles, terrazzo and water resistant adhesive residues 30-60 minutes; on calcium sulphate screed, magnesite screed, wood planks, wooden material tiles and gypsum fibre boards 60 minutes



Storage information:

not below +5 °C, sensitive to frost

Base:

polymer dispersion

Order information:

300405 | 36067 – 10.0 kg – pallet: 60 pieces
300407 | 36069 – 5.0 kg – pallet: 96 pieces
300409 | 36068 – 1.0 kg – pallet: 480 pieces; 40 boxes with 12 pieces

WAKOL PS 275 Concrete Repair Primer



Area of application:

Ready-to-use primer to strengthen dry, porous, completely brittle, absorbent, cement based subfloors indoors.

Application method:

WAKOL MS Special Roller or velour roller

Consumption:

approx. 600 g/m², depending on the absorption of the subfloor

Drying time:

3-5 days

Storage information:

not below +5 °C, sensitive to frost

Base:

sodium silica

Order information:

361603 | 35204 – 11.0 kg – pallet: 60 pieces



WAKOL D 3003 Dispersion Primer



Area of application:

Ready-to-use dispersion-based primer for priming cement screed, calcium sulphate screed, cast asphalt screed, magnesite screed (with exclusively mineral-based additives), concrete, gypsum fibre boards, water-resistant adhesive residues as well as Wakol levelling and filling compounds before subsequent levelling indoors.

Application method:

WAKOL Primer Roller or velour roller

Consumption:

approx. 90-140 g/m²

Drying time:

on cement screeds and concrete following visible drying; on calcium sulphate screed and gypsum fibre boards after at least 60 minutes; on cast asphalt screed and water-resistant adhesive residues after approx. 30-60 minutes



Storage information:

not below +5 °C, sensitive to frost

Base:

polymer dispersion

Blue Angel:

DE-UZ 113

Order information:

300305 | 36066 – 10.0 kg – pallet: 60 pieces

WAKOL PS 205 Cast Resin



Area of application:

Quick hardening polymer-modified two-component silica resin for renovating concrete subfloor cracks as well as for bonding studded boards, metal sections and synthetic or natural stone to absorbent and non-absorbent subfloors indoors.

Mixture:

1:1 parts by volume

Consumption:

depending on the scope of the repair work, for adhesive work approx. 200-300 g/m²

Pot life:

15 °C approx. 13 min., 20 °C approx. 10 min., 25 °C approx. 8 min., 30 °C approx. 7 min.

Hardening time:

15 °C approx. 40 min., 20 °C approx. 30 min., 25 °C approx. 22 min., 30 °C approx. 18 min.

Storage information:

not below +10 °C, store in a dry place, sensitive to frost

Base:

silica resin

Order information:

360505 + 360405 | 41294 – 300 ml A-comp. + 300 ml B-comp. – pallet: 240 pieces each A+B; 40 boxes with 6 pieces A+B + 6 x 20 corrugated connectors



WAKOL DL 3078 Conductive Primer



Area of application:

Ready-to-use conductive dispersion-based primer for subsequent conductive laying of textile and elastic flooring. WAKOL DL 3078 replaces the laying of a copper band net.

Application method:

WAKOL Primer Roller

Consumption:

approx. 120-150 g/m²

Drying time:

approx. 3-5 hours



Storage information:

not below +5 °C, sensitive to frost

Base:

acrylate dispersion

Order information:

307803 | 25687 – 10.0 kg – pallet: 60 pieces

WAKOL R 4515 Tile Cleaner



Area of application:

Cleaner for manual or machine application on old tiled floors for removal of layers of old care products and extreme dirt before subsequent laying.

Mixture:

1 part WAKOL R 4515 + 3 parts water

Consumption:

1.0 l WAKOL R 4515 / 20 m²

Storage information:

not below +5 °C, sensitive to frost

Base:

tensides

Order information:

451505 | 34988 – 5.0 l – pallet: 128 pieces



WAKOL D 3060 Plastification Additive



Area of application:

Ready-to-use dispersion for upgrading WAKOL Z 645 Filling Compound, WAKOL Z 640 Filling Compound, WAKOL Z 630 Levelling Compound, WAKOL Z 625 Levelling Compound, WAKOL Z 615 Levelling Compound, dust-reduced, WAKOL Z 610 Levelling Compound, dust-reduced, WAKOL A 850 Filling Compound and WAKOL A 830 Levelling Compound to increase adhesion, flexibility and reduction of shrinkage tension for applications indoors.

Mixture:

approx. 4.5-8.0 l WAKOL D 3060 + 20/25 kg of Levelling Compound

Storage information:

not below +5 °C; sensitive to frost

Base:

polyacrylate dispersion

Order information:

306003 | 35890 – 10.0 kg – pallet: 60 pieces



WAKOL Z 715 Quick Setting Levelling Compound



Area of application:

Cement-based quick levelling compound for treating unevenness in layer thickness of 1 to 10 mm unextended, extended from 5 to 25 mm under textile flooring and elastic flooring indoors. For higher loads and as of 2 mm layer thickness suitable underneath parquets. Suitable for heavy loads of 3 mm layer thickness. Can be applied with a rakel. Can be pumped. Low in chromate according to REACH.

Mixture:

approx. 5.75-6.0 l water + 25 kg Z 715

Consumption:

approx. 1.6 kg/m²/mm application thickness

Setting time:

suitable for walking after approx. 1-1.5 h; ready for laying up to 10 mm under PVC/CV flooring and linoleum after approx. 1.5 hours, under parquet, rubber and cork after 12 hours

Pot life:

approx. 20 min.

unextended:

1-10 mm

extended:

5-25 mm

Storage information:

store in a cool and dry place

Base:

special cement

CE marking:

EN 13813:2002 CT-C50-F10

Order information:

507203 | 34910 – 25.0 kg – pallet: 42 pieces



WAKOL Z 610 Levelling Compound, dust-reduced



Area of application:

Dust-reduced, low-tension, cement-based levelling compound for treating unevenness in layer thickness of 1 to 20 mm unextended, extended of 10 to 30 mm under textile flooring and elastic flooring indoors. For higher loads and as of 2 mm layer thickness suitable underneath parquets. Suitable for heavy loads of 3 mm layer thickness. Can be processed in combination with WAKOL D 3060 Plastification Additive. Can be applied with a rakel. Can be pumped. Suitable for direct use in conjunction with surface treatment. Low in chromate according to REACH.

Mixture:

approx. 6.0-6.25 l water + 25 kg Z 610

Consumption:

approx. 1.5 kg/m²/mm application thickness

Setting time:

suitable for walking after approx. 1.5-2 h; ready for laying up to 5 mm after 6 h; up to 10 mm after 12 h; up to 30 mm after 24 h

Pot life:

approx. 20 min.

unextended:

1-20 mm

extended:

10-30 mm

Storage information:

store in a cool and dry place

Base:

special cement

CE marking:

EN 13813:2002 CT-C35-F7

Order information:

508112 | 38417 – 25.0 kg – pallet: 40 pieces



WAKOL Z 615 Levelling Compound, dust-reduced



Area of application:

Cement-based levelling compound for treating unevenness in layer thickness of 1 to 10 mm unextended, extended of 10 to 30 mm under textile flooring and elastic flooring indoors. For higher loads and as of 2 mm layer thickness suitable underneath parquets. Suitable for heavy loads of 3 mm layer thickness. Can be processed in combination with WAKOL D 3060 Plastification Additive. Can be applied with a rakel. Can be pumped. Suitable for direct use in conjunction with surface treatment. Low in chromate according to REACH.

Mixture:

approx. 6.25-6.5 l water + 25 kg Z 615

Consumption:

approx. 1.5 kg/m²/mm application thickness

Setting time:

suitable for walking after approx. 2 h; ready for laying up to 3 mm after 12 h; up to 5 mm after 24 h; up to 10 mm after 48 h; up to 15 mm after 72 h; up to 30 mm after 6 days

Pot life:

approx. 20 min.

unextended:

1-10 mm

extended:

10-30 mm

Storage information:

store in a cool and dry place

Base:

special cement

CE marking:

EN 13813:2002 CT-C35-F7

Order information:

505908 | 34911 – 25.0 kg – pallet: 42 pieces



WAKOL Z 625 Levelling Compound



Area of application:

Cement-based levelling compound for treating unevenness in layer thickness of 1 to 20 mm unextended, extended from 10 to 30 mm under textile flooring and elastic flooring indoors. For higher loads and as of 2 mm layer thickness suitable underneath parquets. Suitable for heavy loads of 3 mm layer thickness. Can be processed in combination with WAKOL D 3060 Plastification Additive. Can be applied with a rakel. Can be pumped. Suitable for direct use in conjunction with surface treatment. Low in chromate according to REACH.

Mixture:

approx. 6.0-6.25 l water + 25 kg Z 625

Consumption:

approx. 1.5 kg/m²/mm application thickness

Setting time:

suitable for walking after approx. 2 h; ready for laying up to 5 mm after 6 h, up to 10 mm after 12 h, up to 30 mm after 24 h

Pot life:

approx. 20 min.

unextended:

1-20 mm

extended:

10-30 mm

Storage information:

store in a cool and dry place

Base:

special cement

CE marking:

EN 13813:2002 CT-C35-F7

Order information:

506812 | 37006 – 25.0 kg – pallet: 40 pieces



WAKOL Z 630 Levelling Compound



Area of application:

Self-levelling, cement-based levelling compound for treating unevenness in layer thicknesses of 1 to 15 mm unextended, extended from 10 to 25 mm under textile flooring and elastic flooring indoors. As of 2 mm layer thickness also underneath parquet. Can be processed in combination with WAKOL D 3060 Plastification Additive. Can be applied with a rakel. Can be pumped. Low in chromate according to REACH.

Mixture:

approx. 6.25-6.5 l water + 25 kg Z 630

Consumption:

approx. 1.5 kg/m²/mm application thickness

Setting time:

suitable for walking after approx. 2h; ready for laying up to 3 mm after 6 h; up to 5 mm after 12 h; up to 10 mm after 24 h; up to 15 mm after 48 h; up to 25 mm extended after 48 h

Pot life:

approx. 25 minutes

unextended:

1-15 mm

extended:

10-25 mm

Storage information:

store in a cool and dry place

Base:

special cement

Blue Angel:

DE-UZ 113

CE marking:

EN 13813: CT-C40-F7

Order information:

506422 | 41665 – 25.0 kg – pallet: 42 pieces



WAKOL Z 635 Levelling Compound



Area of application:

Cement-based levelling compound for treating unevenness in layer thicknesses of 1 to 10 mm under textile flooring and elastic flooring indoors. As of 2 mm layer thickness also underneath parquet. Can be applied with a raket. Can be pumped. Low in chromate according to REACH.

Mixture:

approx. 6.25 l water + 25 kg Z 635

Consumption:

approx. 1.5 kg/m²/mm application thickness

Setting time:

suitable for walking after approx. 2.5 h; ready for laying up to 5 mm after 24 h; up to 10 mm after 48 h

Pot life:

approx. 25 min.

unextended:

1 - 10 mm

extended:

-

Storage information:

store in a cool and dry place

Base:

special cement

Blue Angel:

DE-UZ 113

CE marking:

EN 13813:2002 CT-C30-F7

Order information:

508002 | 42286 – 25.0 kg – pallet: 40 pieces



WAKOL Z 636 Levelling Compound



Area of application:

Self-levelling, cement-based levelling compound for treating unevenness in layer thicknesses of 1 to 10 mm unextended under textile flooring and elastic flooring indoors. As of 2 mm layer thickness also underneath parquet. Can be applied with a raket. Can be pumped. Low in chromate according to REACH.

Mixture:

approx. 6.25-6.5 l water + 25 kg Z 636

Consumption:

approx. 1.5 kg/m²/mm application thickness

Setting time:

suitable for walking after approx. 2h; ready for laying up to 5 mm after 24 h; up to 10 mm after 48 h

Pot life:

approx. 25 minutes

unextended:

1-10 mm

extended:

-

Storage information:

store in a cool and dry place

Base:

special cement

Blue Angel:

DE-UZ 113

CE marking:

EN 13813: CT-C35-F7

Order information:

506203 | 42149 – 25.0 kg – pallet: 42 pieces



WAKOL Z 680 Levelling Compound, dust-reduced



Area of application:

Dust-reduced, cement-based levelling compound for treating unevenness in layer thicknesses of 1 to 10 mm under textile flooring and elastic flooring indoors. Can be applied with a raket. Can be pumped. Low in chromate according to REACH.

Mixture:

approx. 6.0 l water + 25 kg Z 680

Consumption:

approx. 1.5 kg/m²/mm application thickness

Setting time:

suitable for walking after approx. 2-3 h; ready for laying up to 3 mm after 24 h, up to 5 mm after 48 h, up to 10 mm after 72 h

Pot life:

approx. 25 min.

unextended:

1-10 mm

extended:

-

Storage information:

store in a cool and dry place

Base:

special cement

CE marking:

EN 13813:2002 CT-C25-F7

Order information:

506912 | 38419 – 25,0 kg – pallet: 40 pieces



WAKOL Z 640 Filling Compound



Area of application:

Fine, stable, cement-based levelling compound for treating unevenness with layer thickness up to 20 mm unextended, extended from 10 to 50 mm, for smoothing steps and door joints as well as for repairing concrete subfloor damage indoors. Can be processed in combination with WAKOL D 3060 Plastification Additive. Flexible. Very good moldability. Low in chromate according to REACH.

Mixture:

approx. 6.75-7.5 l water + 25 kg Z 640

Consumption:

approx. 1.4 kg/m²/mm application thickness

Setting time:

suitable for walking and coverable after approx. 30 min., ready for laying after approx. 3 h

Pot life:

approx. 15 min.

unextended:

up to 20 mm

extended:

10 to 50 mm

Storage information:

store in a cool and dry place

Base:

special cement

CE marking:

EN 13813:2002 CT-C35-F6

Order information:

506512 | 32148 – 25.0 kg – pallet: 40 pieces



WAKOL Z 675 Levelling Compound



Area of application:

Cement-based levelling compound for treating unevenness in layer thicknesses of 1 to 10 mm under textile flooring and elastic flooring indoors. Can be applied with a raket. Can be pumped. Low in chromate according to REACH.

Mixture:

approx. 6.0 l water + 25 kg Z 675

Consumption:

approx. 1.5 kg/m²/mm application thickness

Setting time:

suitable for walking after approx. 3 h; ready for laying up to 2 mm after 24 h; up to 5 mm after 48 h; up to 10 mm after 72 h

Pot life:

approx. 30 min.

unextended:

1-10 mm

extended:

-

Storage information:

store in a cool and dry place

Base:

special cement

CE marking:

EN 13813:2002 CT-C25-F6

Order information:

506312 | 25027 – 25.0 kg – pallet: 40 piece



WAKOL Z 645 Filling Compound, dust-reduced



Area of application:

Dust-reduced, stable, cement-based levelling compound for treating unevenness in layer thicknesses of 1 to 10 mm unextended, extended from 10 to 50 mm for rough smoothing of uneven areas, smoothing steps and door joints and for repairing concrete subfloor damage indoors. Can be processed in combination with WAKOL D 3060 Plastification Additive. Flexible. Very good moldability. Low in chromate according to REACH.

Mixture:

approx. 6.75-8.0 l water + 25 kg Z 645

Consumption:

approx. 1.3 kg/m²/mm application thickness

Setting time:

suitable for walking after approx. 30 min.; ready for laying after approx. 60 min.

Pot life:

approx. 15 minutes

unextended:

1-10 mm

extended:

10-50 mm

Storage information:

store in a cool and dry place

Base:

special cement

CE marking:

EN 13813: CT-C30-F7

Order information:

506722 | 41371 – 25.0 kg – pallet: 40 pieces



WAKOL A 830 Levelling Compound



Area of application:

Levelling Compound based on calcium sulphate for treating unevenness in layer thicknesses of 1 to 20 mm unextended, extended of 10 to 30 mm under textile flooring and elastic flooring indoors; as of 2 mm layer thickness also underneath parquet. Can be processed in combination with WAKOL D 3060 Plastification Additive. Especially suitable on calcium sulphate bonded subfloors, dry extension elements, wooden material tiles and on cast asphalt concrete. Can be applied with a rakel. Can be pumped.

Mixture:

approx. 6,0 l water + 25 kg A 830

Consumption:

approx. 1.5 kg/m²/mm application thickness

Setting time:

suitable for walking after 2 h; ready for laying up to 3 mm after 24h; 3-10 mm every mm 24 h drying time, ≥ 11 mm CM measurement (residual humidity < 0.5 CM%)

Pot life:

approx. 25 min.

unextended:

1-20 mm

extended:

10-30 mm

Storage information:

store in a cool and dry place

Base:

calcium sulfate

Blue Angel:

DE-UZ 113

CE marking:

EN 13813:2002 CA-C30-F7

Order information:

507703 | 35041 – 25.0 kg – pallet: 42 pieces

WAKOL Z 505 Repair Compound, fine



Area of application:

Cement-based repair compound for partial fine skimming, for treating unevenness, for touching up subfloors, for smoothing steps and for patching door joints, for filling holes, depressions and cracks indoors. Low in chromate according to REACH.

Mixture:

approx. 0.33 l water + 1 kg Z 505

Consumption:

approx. 1.5 kg/m²/mm application thickness

Setting time:

suitable for walking and coverable after approx. 10 min., ready for laying after approx. 30 min., 12 h for laying parquet

Pot life:

approx. 5 min.

unextended:

0-70 mm

extended:

-

Storage information:

store in a cool and dry place, not sensitive to frost

Base:

special cement

CE marking:

EN 13813:2002 CT-C20-F7

Order information:

503804 | 22473 – 5.0 kg – pallet: 72 pieces

WAKOL A 850 Filling Compound



Area of application:

Fine, stable, fast drying calcium sulphate-based levelling compound for levelling unevenness in layer thicknesses of 0-20 mm unextended, up to 40 mm extended for smoothing out unevenness, levelling steps on stairways, adjusting door joints and repairing strongly damaged screeds indoors. Can be processed in combination with WAKOL D 3060 Plastification Additive.

Mixture:

approx. 5.0 l water + 20 kg A 850

Consumption:

approx. 1.4 kg/m²/mm application thickness

Setting time:

suitable for walking and coverable after approx. 30 min., ready for laying after approx. 4 h

Pot life:

approx. 15 min.

unextended:

0-20 mm

extended:

up to 40 mm

Storage information:

store in a cool and dry place

Base:

calcium sulfate

CE marking:

EN 13813:2002 CA-C30-F7

Order information:

505712 | 36004 – 20.0 kg – pallet: 42 pieces

WAKOL Z 515 Thin Screed



Area of application:

Quick-drying, self-levelling, cement-based thin screed, for treating unevenness in layer thicknesses between 3-30 mm unextended, 10-50 mm extended, under textile flooring and elastic flooring indoors. As of 2 mm layer thickness suitable underneath parquets. Can be pumped. Low in chromate according to REACH.

Mixture:

approx. 4.25 l water + 25 kg Z 515

Consumption:

approx. 1.7 kg/m²/mm application thickness

Setting time:

suitable for walking after approx. 2 h, ready for laying after 24 h

Pot life:

approx. 25 min.

unextended:

3-30 mm

extended:

10-50 mm

Storage information:

store in a cool and dry place

Base:

special cement

CE marking:

EN 13813:2002 CT-C35-F7

Order information:

505822 | 31486 – 25.0 kg – pallet: 40 pieces

WAKOL A 885 Levelling Compound



Area of application:

Levelling Compound based on calcium sulphate for treating unevenness in layer thicknesses of 1 to 20 mm unextended, extended of 10 to 30 mm under textile flooring and elastic flooring indoors. Especially suitable on calcium sulphate bonded subfloors, dry extension elements, wooden material tiles and on cast asphalt concrete. Can be applied with a rakel. Can be pumped.

Mixture:

approx. 5,25 - 5,5 l water + 25 kg WAKOL A 885

Consumption:

approx. 1.5 kg/m²/mm application thickness

Setting time:

suitable for walking after 3 h; ready for laying up to 3 mm after 24 h, 3-10 mm every mm 24 h drying time, ≥ 11 mm CM measurement (residual humidity < 0.5 CM%)

Pot life:

approx. 20 min.

unextended:

1-20 mm

extended:

10-30 mm

Storage information:

store in a cool and dry place

Base:

calcium sulfate

CE marking:

EN 13813:2002 CA-C25-F7

Order information:

507303 | 39219 – 25.0 kg – pallet: 40 pieces

WAKOL Z 560 Rapid Screed



Area of application:

Fast-drying, low-tension quick cement screed for use in layer thicknesses between 20-60 mm for repairing and restoring flaws and imperfections, as well as for manufacturing compound screeds (from 20 mm), screeds on separating layers (from 35 mm) and screeds on insulation layers (from 35 mm) in internal areas. Can be pumped. Low in chromate according to REACH.

Mixture:

approx. 1.8 l water + 25 kg Z 560

Consumption:

approx. 1.85 kg/m²/mm application thickness

Setting time:

suitable for walking after approx. 3 h, coverable after approx. 3-4 h; ready for laying after 24 h

Pot life:

approx. 60 min.

unextended:

20-60 mm

extended:

-

Storage information:

store in a cool and dry place

Base:

special cement

CE marking:

EN 13813:2002 CT-C35-F6

Order information:

505102 | 31487 – 25.0 kg – pallet: 40 pieces

WAKOL Z 590 Light Screed



Area of application:

Low-stress, cementitious lightweight screed for use in layer thicknesses of 20-300 mm in a system with WAKOL AR 150 Reinforcement Fabric and approved Wakol levelling compounds for levelling and filling substrates, even in structurally problematic areas with a bond (from 20 mm) and on a separating layer (from 30 mm) in internal areas. Can be pumped. Low in chromate according to REACH.

Mixture:

approx. 4.5-5.0 l water + 16 kg / 50 l Z 590

Consumption:

approx. 0.32 kg/m²/mm application thickness

Setting time:

suitable for walking after 12 h, ready for covering and can be levelled over after approx. 24 h

Pot life:

approx. 60 min.

unextended:

20-300 mm

extended:

-

Storage information:

store in a cool and dry place

Base:

polystyrene foam granules with cementitious binder

Order information:

505604 – 16.0 kg | 50.0 l – pallet: 40 pieces



WAKOL S 28 Sprinkling Sand



Area of application:

Washed and annealed sand with irregular, broken grain and a grain size of 0.2 to 0.8 mm for sprinkling reaction adhesives and reaction primers, as well as WAKOL PS 205 Cast Resin or WAKOL PS 275 Concrete Repair Primer.

Application method:

by hand

Consumption:

500-1000 g/m²

Storage information:

store in cool and dry place, not sensitive to frost

Base:

special sand

Order information:

506103 | 34973 – 25.0 kg – pallet: 40 pieces



WAKOL AR 114 Reinforcement Fibres



Area of application:

Alkali-resistant glass fibres for reinforcing WAKOL Z 610 Levelling Compound, dust-reduced, WAKOL Z 615 Levelling Compound, dust-reduced, WAKOL Z 625 Levelling Compound, WAKOL Z 630 Levelling Compound and WAKOL A 830 Levelling Compound for reducing cracking on unstable subfloors, wood planks, wooden material tiles and prefabricated screeds indoors.

Consumption:

1 bag per sac of levelling compound

Storage information:

store in a cool and dry place, not sensitive to frost

Base:

alkali-resistant glass fibres

Order information:

595505 | 37262 – 15 bags with 0.25 kg each – pallet: 750 pieces; 50 buckets with 15 bags



WAKOL MS 552 PVC and Rubber Adhesive



Area of application:

Structure viscous 1-component MS adhesive for laying LVT flooring, homogeneous and heterogeneous PVC flooring, CV flooring, rubber flooring, needle fleece flooring, linoleum flooring, PVC cork flooring according to DIN EN 655, entrance mats, artificial lawn and Wakol Sealing systems on absorbent and non-absorbent wall and floor areas indoors. Waterproof. WAKOL MS 552 corresponds to DIN EN ISO 22636.

Application method:

trowel notch size according to TKB A1, A2, B1 or B2

Consumption:

approx. 300-580 g/m²

Airing time:

approx. 5-30 minutes

Open time:

approx. 10-35 minutes

Storage information:

not sensitive to frost

Base:

MS polymer

Order information:

363905 | 35276 – 7.5 kg – pallet: 72 pieces



WAKOL S 25 Elongating Sand



Area of application:

Washed and dried quartz sand with grain size between 0.1 – 3.15 mm for elongation of approved Wakol levelling compounds, Wakol filling compounds and Wakol thin screed.

Mixture:

depending on the Wakol product to be elongated

Storage information:

store in cool and dry place, not sensitive to frost

Base:

quartz sand

Order information:

506003 | 36005 – 25.0 kg – pallet: 40 pieces



WAKOL MS 550 PVC and Rubber Adhesive



Area of application:

1-component MS adhesive for laying homogeneous and heterogeneous PVC flooring in planks and tiles, LVT flooring, CV flooring, needle fleece flooring, linoleum flooring, PVC cork flooring, entrance mats, artificial lawn as well as caoutchouc flooring in planks and tiles on absorbent and non-absorbent subfloors indoors and outdoors. Waterproof. WAKOL MS 550 corresponds to DIN EN ISO 22636.

Application method:

trowel notch size according to TKB A1, A2, B1 or B2

Consumption:

approx. 300-580 g/m²

Airing time:

approx. 5-30 minutes

Open time:

approx. 10-35 minutes

Storage information:

not sensitive to frost

Base:

MS polymer

Order information:

363805 | 35279 – 7.5 kg – pallet: 72 pieces



WAKOL PU 270 Polyurethane Adhesive



Area of application:

2-component polyurethane adhesive for laying caoutchouc flooring with smooth and profiled backing, linoleum flooring, textile flooring, outdoor flooring and PVC flooring on absorbent and non-absorbent subfloors indoors and outdoors. Waterproof. WAKOL PU 270 corresponds to DIN EN ISO 22636.

Application method:

trowel notch size according to TKB A2, B1 or B2

Consumption:

approx. 350-700 g/m²

Airing time:

approx. 5-70 minutes, depending on type of floor covering

Open time:

approx. 70-80 minutes

Storage information:

not below +5 °C, sensitive to frost

Base:

polyurethane resin

Order information:

369206 + 369306 | 41280 – combination pack
6.0 kg A-comp. + 1.05 kg B-comp. – pallet: 60 pieces



WAKOL D 3330 LVT Flooring Adhesive



Area of application:

Dispersion adhesive for laying approved LVT flooring in tiles and planks up to a max. lengths of 125 cm and flat-lying heterogeneous PVC or CV flooring in rolls on subfloors levelled with cement-based Wakol levelling compound and primed with WAKOL D 3004 Primer Concentrate, diluted with water, or WAKOL D 3003 Dispersion Primer. Also suitable for laying modular textile floor coverings (without multiple restarts), using the contact method, WAKOL D 3330 LVT Flooring Adhesive is also suitable for laying PVC soft skirting and in stair areas, for PVC flooring on steps and risers.

Application method:

special roller, enclosed

Consumption:

approx. 120-140 g/m²

Airing time:

approx. 20-30 minutes

Open time:

approx. 180 minutes

Storage information:

not below +5 °C, sensitive to frost

Base:

acrylate dispersion

Order information:

333004 | 37451 – 10.0 kg – pallet: 24 pieces



WAKOL DL 3365 StarLeit



Area of application:

Light-coloured, fibre-containing dispersion adhesive for the laying of conductive PVC, textile and linoleum flooring as well as for conductive caoutchouc flooring of thickness up to 4 mm on appropriately prepared subfloors. WAKOL DL 3365 corresponds to DIN EN ISO 22636.

Application method:

trowel notch size according to TKB S2, Pajarito 7 or Pajarito 25; trowel notch enclosed

Consumption:

approx. 250-550 g/m²

Airing time:

approx. 10-15 minutes

Open time:

approx. 20-40 minutes

Storage information:

not below +5 °C, sensitive to frost

Base:

acrylate dispersion

Order information:

336504 | 30098 – 12.0 kg – pallet: 40 pieces



WAKOL D 3320 PVC Adhesive



Area of application:

Dispersion adhesive for laying LVT flooring, homogeneous caoutchouc flooring up to 2.5 mm layer thickness, heterogeneous caoutchouc flooring up to 4 mm layer thickness, textile flooring with PVC, PUR or latex fittings on absorbent subfloors, homogeneous PVC flooring in sheets and tiles and CV flooring on all absorbent and non-absorbent subfloors indoors. WAKOL D 3320 corresponds to DIN EN ISO 22636.

Application method:

trowel notch size according to TKB A1, A2 or B1

Consumption:

approx. 250-450 g/m²

Airing time:

approx. 5-20 minutes on absorbent subfloors, approx. 30-40 minutes on non-absorbent subfloors

Open time:

approx. 30-50 minutes

Storage information:

not below +5 °C, sensitive to frost

Base:

acrylate dispersion

Order information:

332003 | 25253 – 12.0 kg – pallet: 44 pieces



WAKOL D 3360 VersaTack



Area of application:

Dispersion adhesive for laying LVT flooring, linoleum, caoutchouc flooring up to 2.5 mm layer thickness, textile flooring with fleece backing, latex foam backing, synthetic double backing or jute backing, woven textile flooring and needle fleece flooring on absorbent subfloors as well as for PVC and CV flooring on absorbent and non-absorbent subfloors. WAKOL D 3360 corresponds to DIN EN ISO 22636.

Application method:

trowel notch size according to TKB A1, A2, B1 or B2

Consumption:

approx. 250-550 g/m²

Airing time:

approx. 10-20 minutes

Open time:

approx. 20-30 minutes

Storage information:

not below +5°C, sensitive to frost

Base:

acrylate dispersion

Order information:

336002 | 25689 – 14.0 kg – pallet: 44 pieces
336004 | 35847 – 6.0 kg – pallet: 90 pieces



WAKOL D 3319 LVT Flooring Adhesive, fibre-containing



Area of application:

Fibre-reinforced, dispersion-based wet-bed adhesive for laying LVT flooring in planks and tiles, homogeneous and heterogeneous PVC flooring in planks and tiles as well as CV flooring on absorbent subfloors indoors. WAKOL D 3319 corresponds to DIN EN ISO 22636.

Application method:

trowel notch size according to TKB A2

Consumption:

approx. 250-300 g/m²

Airing time:

approx. 5-10 minutes

Open time:

approx. 10-20 minutes

Storage information:

not below +5 °C; sensitive to frost

Base:

acrylate dispersion

Order information:

331902 | 32408 – 13.0 kg – pallet: 44 pieces



WAKOL D 3318 MultiFlex, fibre-containing



Area of application:

Fibre-reinforced, dispersion adhesive for laying homogeneous and heterogeneous PVC flooring in strips and tiles, LVT flooring adhesive in planks and tiles, PVC-free floor coverings with PU or PO base or with fleece backing in strips, boards and tiles, CV Flooring, linoleum flooring and rubber flooring up to a thickness of 4 mm on properly prepared absorbent subfloors indoors. WAKOL D 3318 corresponds to DIN EN ISO 22636.

Application method:

trowel notch size according to TKB A2 or B1

Consumption:

approx. 290-350 g/m²

Airing time:

approx. 5-15 minutes

Open time:

approx. 30 minutes

Storage information:

not below +5 °C, sensitive to frost

Base:

acrylate dispersion

Blue Angel:

DE-UZ 113

Order information:

331803 | 35855 – 13,0 kg – palette: 44 pieces
331805 | 35854 – 6,0 kg – palette: 90 pieces



WAKOL D 3317 PVC Adhesive, fibre-containing



Area of application:

Fibre-reinforced dispersion based adhesive for laying LVT flooring in planks and tiles, homogeneous and heterogeneous PVC flooring in rolls and tiles, CV flooring as well as caoutchouc flooring up to 2.5 mm layer thickness on absorbent subfloors indoors. WAKOL D 3317 corresponds to DIN EN ISO 22636.

Application method:

trowel notch size according to TKB A2

Consumption:

approx. 300-330 g/m²

Airing time:

approx. 5-15 minutes

Open time:

approx. 10-25 minutes

Storage information:

not below +5 °C, sensitive to frost

Base:

acrylate dispersion

Order information:

331703 | 44526 – 13.0 kg – pallet: 44 pieces



WAKOL D 3316 PVC Adhesive, fibre-containing



Area of application:

Fibre-reinforced dispersion based adhesive for laying LVT flooring in planks and tiles, homogeneous and heterogeneous PVC flooring in rolls and tiles as well as CV flooring on absorbent subfloors indoors. WAKOL D 3316 corresponds to DIN EN ISO 22636.

Application method:

trowel notch size according to TKB A2

Consumption:

approx. 300-330 g/m²

Airing time:

approx. 5-10 minutes

Open time:

approx. 10-15 minutes

Storage information:

not below +5 °C, sensitive to frost

Base:

acrylate dispersion

Blue Angel:

DE-UZ 113

Order information:

331607 | 44433 – 13.0 kg – pallet: 44 pieces



WAKOL D 3313 PVC free Adhesive



Area of application:

Dispersion-based adhesive for laying PVC-free flooring with PU or PO base or with fleece backing in strips, boards and tiles, homogeneous and heterogeneous PVC flooring in strips and tiles, LVT flooring in planks and tiles, CV flooring as well as caoutchouc flooring up to 4 mm layer thickness on absorbent subfloors indoors. WAKOL D 3313 corresponds to DIN EN ISO 22636.

Application method:

trowel notch size according to TKB A2 or B1

Consumption:

approx. 280-420 g/m²

Airing time:

approx. 5-10 minutes

Open time:

approx. 25 minutes

Storage information:

not below +5 °C, sensitive to frost

Base:

polymer dispersion

Order information:

331305 | 36075 – 12.0 kg – pallet: 44 pieces



WAKOL D 3307 PVC Adhesive



Area of application:

Dispersion adhesive for laying homogeneous and heterogeneous PVC flooring in planks and tiles, LVT flooring, CV flooring, textile flooring with fleece backing, textile double backing or jute backing as well as woven textile flooring on absorbent subfloors indoors. WAKOL D 3307 corresponds to DIN EN ISO 22636.

Application method:

trowel notch size according to TKB A2, B1 or B2

Consumption:

approx. 330-530 g/m²

Airing time:

approx. 10-20 minutes

Open time:

approx. 15-20 minutes

Storage information:

not below +5 °C, sensitive to frost

Base:

acrylate dispersion

Blue Angel:

DE-UZ 113

Order information:

330703 | 35867 – 14.0 kg – pallet: 44 pieces
330705 | 35863 – 6.0 kg – pallet: 90 pieces
330706 | 35865 – 3.0 kg – pallet: 150 pieces



WAKOL D 3210 Kontakto



Area of application:

Dispersion adhesive for laying textile flooring such as tufting, woven flooring and needle fleece flooring, homogeneous and heterogeneous PVC flooring, PVC soft skirting, stair profiles, hollow neck plinth profiles, CV, linoleum and caoutchouc flooring as well as deflectors with contact method on absorbent and non-absorbent subfloors. WAKOL D 3210 Kontakto corresponds to DIN EN ISO 22636.

Application method:

short-haired velour roller or brush

Consumption:

approx. 250-500 g/m²

Airing time:

approx. 20-50 minutes depending on the absorbency of the subfloor, approx. 150 minutes for flooring, preferably overnight

Open time:

up to 6 hours

Storage information:

not below +5 °C, sensitive to frost

Base:

polymer dispersion

Order information:

321006 | 36074 – 2,5 kg – pallet: 120 pieces



WAKOL D 3125 LVT Flooring Adhesive



Area of application:

Dispersion based adhesive for laying LVT flooring, homogeneous and heterogeneous PVC flooring in planks and tiles, CV flooring on absorbent and non-absorbent subfloors. WAKOL D 3125 corresponds to DIN EN ISO 22636.

Application method:

trowel notch size according to TKB A1

Consumption:

approx. 190-220 g/m² with TKB A1

Airing time:

approx. 30 minutes on absorbent subfloors, approx. 60 minutes on non-absorbent subfloors

Open time:

approx. 180 minutes

Storage information:

not below +5 °C; sensitive to frost

Base:

acrylate dispersion

Order information:

312503 | 35885 – 10.0 kg – pallet: 44 pieces



WAKOL MS 246 StarMonti



Area of application:

Firm-elastic 1-component MS mounting adhesive for bonding skirtings made of wood or plastic, wooden materials and metals on absorbent and non-absorbent subfloors indoors. Can be painted over.

Application method:

WAKOL Manual Applicator 400 or WAKOL Applicator 50 with enclosed nozzle

Airing time:

none

Open time:

approx. 5-10 minutes

Hardening time:

up to 2.5 mm layer after 24 hours

Storage information:

store in a cool and dry place, not sensitive to frost

Base:

MS polymer

Order information:

362603 | 36179 – 310 ml – pallet: 1.152 pieces; 96 boxes with 12 pieces



WAKOL MS 245 Montinator



Area of application:

Solvent-free, single-component, elastic MS mounting adhesive for bonding wood materials, metals, plastics, concrete, stone, decorative sheets, wall panelling, panels and wood borders. Can be painted over.

Application method:

WAKOL Manual Applicator 400 or WAKOL Applicator 50 with enclosed nozzle

Airing time:

none

Open time:

approx. 5-10 minutes

Hardening time:

up to 2.5 mm layer after 24 hours

Temperature resistant:

-40 °C to +90 °C

Storage information:

store in a cool and dry place, not sensitive to frost

Base:

MS polymer

Order information:

362505 | 35000 – 310 ml – pallet: 1.152 pieces; 96 boxes with 12 pieces



WAKOL NE 479 Contact Adhesive



Area of application:

Neoprene adhesive for laying skirting boards as well as textile, homogeneous PVC, caoutchouc, natural cork and linoleum flooring on stairs on absorbent and non-absorbent subfloors.

Application method:

on both sides with brush, smooth spatula or trowel notch size according to TKB A1

Consumption:

approx. 200-300 g/m²

Airing time:

approx. 15 minutes

Open time:

approx. 50 minutes

Storage information:

not below +5 °C, sensitive to frost

Base:

polychloroprene

Order information:

147926 | 35269 – 6.0 kg – pallet: 60 pieces
147924 | 35270 – 10 pieces - 0.65 kg each – pallet: 500 pieces; 50 boxes with 12 pieces



WAKOL NE 470 Contact Adhesive



Area of application:

Neoprene adhesive for laying skirting boards, edges of staircases and laying staircases with textile flooring, homogeneous PVC coverings, rubber floor coverings, linoleum flooring, natural cork coverings on absorbent and non-absorbent subfloors indoors.

Application method:

both sides with brush, both sides with smooth spatula or trowel notch size according to TKB A1

Consumption:

approx. 200-350 g/m²

Airing time:

approx. 15-20 minutes

Open time:

approx. 30 minutes

Storage information:

not below +5 °C; sensitive to frost

Base:

polychloroprene

Order information:

147007 | 35271 – 6.0 kg – pallet: 60 pieces



WAKOL DL 3365 StarLeit



Area of application:

Light-coloured, fibre-containing dispersion adhesive for the laying of conductive PVC, textile and linoleum flooring as well as for conductive caoutchouc flooring of thickness up to 4 mm on appropriately prepared subfloors. WAKOL DL 3365 corresponds to DIN EN ISO 22636.

Application method:

trowel notch size according to TKB S2, Pajarito 7 or Pajarito 25; trowel notch enclosed

Consumption:

approx. 250-550 g/m²

Airing time:

approx. 10-15 minutes

Open time:

approx. 20-40 minutes

Storage information:

not below +5 °C, sensitive to frost

Base:

acrylate dispersion

Order information:

336504 | 30098 – 12.0 kg – pallet: 40 pieces



WAKOL D 3312 Carpet Adhesive



Area of application:

High shear-resistant dispersion adhesive for laying needle fleece flooring, textile flooring with fleece, synthetic double or jute backing as well as woven flooring on absorbent subfloors. WAKOL D 3312 corresponds to DIN EN ISO 22636.

Application method:

trowel notch size according to TKB B1 or B2

Consumption:

approx. 400-525 g/m²

Airing time:

approx. 5-15 minutes

Open time:

approx. 15 minutes

Storage information:

not below +5 °C; sensitive to frost

Base:

acrylate dispersion

Order information:

331203 | 35858 – 14.0 kg – pallet: 44 pieces



WAKOL D 3360 VersaTack



Area of application:

Dispersion adhesive for laying LVT flooring, linoleum, caoutchouc flooring up to 2.5 mm layer thickness, textile flooring with fleece backing, latex foam backing, synthetic double backing or jute backing, woven textile flooring and needle fleece flooring on absorbent subfloors as well as for PVC and CV flooring on absorbent and non-absorbent subfloors. WAKOL D 3360 corresponds to DIN EN ISO 22636.

Application method:

trowel notch size according to TKB A1, A2, B1 or B2

Consumption:

approx. 250-550 g/m²

Airing time:

approx. 10-20 minutes

Open time:

approx. 20-30 minutes

Storage information:

not below +5°C, sensitive to frost

Base:

acrylate dispersion

Order information:

336002 | 25689 – 14.0 kg – pallet: 44 pieces
336004 | 35847 – 6.0 kg – pallet: 90 pieces



WAKOL D 3311 Linoleum and Carpet Adhesive



Area of application:

Dispersion adhesive for laying linoleum flooring, korkment flooring, tufting flooring with matted backing, synthetic second backing or jute backing, woven flooring and needle fleece flooring on absorbent subfloors indoors. WAKOL D 3311 corresponds to DIN EN ISO 22636.

Application method:

trowel notch size according to TKB B1 or B2

Consumption:

approx. 325-450 g/m²

Airing time:

approx. 0-10 minutes

Open time:

approx. 15 minutes

Storage information:

not below +5 °C; sensitive to frost

Base:

acrylate dispersion

Order information:

331102 | 35859 – 14.0 kg – pallet: 44 pieces



WAKOL D 3318 MultiFlex, fibre-containing



Area of application:

Fibre-reinforced, dispersion adhesive for laying homogeneous and heterogeneous PVC flooring in strips and tiles, LVT flooring adhesive in planks and tiles, PVC-free floor coverings with PU or PO base or with fleece backing in strips, boards and tiles, CV Flooring, linoleum flooring and rubber flooring up to a thickness of 4 mm on properly prepared absorbent subfloors indoors. WAKOL D 3318 corresponds to DIN EN ISO 22636.

Application method:

trowel notch size according to TKB A2 or B1

Consumption:

approx. 290-350 g/m²

Airing time:

approx. 5-15 minutes

Open time:

approx. 30 minutes

Storage information:

not below +5 °C, sensitive to frost

Base:

acrylate dispersion

Blue Angel:

DE-UZ 113

Order information:

331803 | 35855 – 13,0 kg – pallet: 44 pieces
331805 | 35854 – 6,0 kg – pallet: 90 pieces



WAKOL D 3310 Carpet Adhesive, low-odour



Area of application:

Dispersion adhesive for laying textile flooring with fleece backing, synthetic double backing or jute backing, woven flooring and needle fleece flooring on absorbent subfloors. Odour-neutral after coat is fully dry. WAKOL D 3310 corresponds to DIN EN ISO 22636.

Application method:

trowel notch size according to TKB B1 or B2

Consumption:

approx. 400-525 g/m²

Airing time:

approx. 5-10 minutes

Open time:

approx. 10-15 minutes

Storage information:

not below +5 °C, sensitive to frost

Base:

acrylate dispersion

Blue Angel:

DE-UZ 113

Order information:

331002 | 35860 – 14.0 kg – pallet: 44 pieces



WAKOL D 3308 Carpet Adhesive



Area of application:

Dispersion adhesive for laying textile flooring with fleece backing, synthetic double backing or jute backing, woven flooring, needle fleece flooring and PVC/CV flooring with fleece backing on absorbent subfloors. WAKOL D 3308 corresponds to DIN EN ISO 22636.

Application method:

trowel notch size according to TKB A2, B1 or B2

Consumption:

approx. 300-525 g/m²

Airing time:

approx. 5-10 minutes

Open time:

approx. 10-15 minutes

Storage information:

not below +5 °C, sensitive to frost

Base:

acrylate dispersion

Order information:

330807 | 35861 – 14.0 kg – pallet: 44 pieces



WAKOL D 3304 Linoleum Adhesive



Area of application:

Dispersion adhesive for laying linoleum and cork flooring, tufting flooring with fleece, synthetic double or jute backing as well as woven flooring and needle fleece flooring on absorbent subfloors. WAKOL D 3304 corresponds to DIN EN ISO 22636.

Application method:

trowel notch size according to TKB B1 or B2

Consumption:

approx. 375-500 g/m²

Airing time:

approx. 0-5 minutes

Open time:

approx. 15 minutes

Storage information:

not below +5 °C, sensitive to frost

Base:

acrylate dispersion

Blue Angel:

DE-UZ 113

Order information:

330404 | 35870 – 14.0 kg – pallet: 44 pieces



WAKOL D 3270 SpaltTex



Area of application:

Dispersion-based adhesive for renovation with "built-in zipper" for laying textile flooring with fleece backing or synthetic double backing or Fabromont twined yarn® on absorbent subfloors. Flooring can be easily removed without residue. WAKOL D 3270 corresponds to DIN EN ISO 22636.

Application method:

trowel notch size according to TKB B1 or B2

Consumption:

approx. 250-400 g/m²

Airing time:

approx. 5-10 minutes

Open time:

approx. 15 minutes

Storage information:

not below +5 °C, sensitive to frost

Base:

acrylate dispersion

Order information:

327002 | 35872 – 10.0 kg – pallet: 44 pieces



WAKOL D 3210 Kontakto



Area of application:

Dispersion adhesive for laying textile flooring such as tufting, woven flooring and needle fleece flooring, homogeneous and heterogeneous PVC flooring, PVC soft skirting, stair profiles, hollow neck plinth profiles, CV, linoleum and caoutchouc flooring as well as deflectors with contact method on absorbent and non-absorbent subfloors. WAKOL D 3210 Kontakto corresponds to DIN EN ISO 22636.

Application method:

short-haired velour roller or brush

Consumption:

approx. 250-500 g/m²

Airing time:

approx. 20-50 minutes depending on the absorbency of the subfloor, approx. 150 minutes for flooring, preferably overnight

Open time:

up to 6 hours

Storage information:

not below +5 °C, sensitive to frost

Base:

polymer dispersion

Order information:

321006 | 36074 – 2,5 kg – pallet: 120 pieces



WAKOL PU 272 Artificial Turf Adhesive



Area of application:

2-component, green coloured PU adhesive for laying artificial turf on WAKOL AS 130 Seaming Tape, on absorbent and non-absorbent subfloors as well as moist, but superficially dried, drainable subfloors outdoors.

Application method:

trowel notch size according to TKB B3 or B11

Consumption:

approx. 850-1200 g/m²

Airing time:

none

Open time:

approx. 90 minutes

Storage information:

not below +5 °C, sensitive to frost

Base:

polyurethane resin

Order information:

368812 | 41343 – 12.0 kg A-comp. – pallet: 44 pieces
369412 | 41344 – 1.12 kg B-Comp. – pallet: 440 pieces;
40 boxes with 11 pieces



WAKOL MS 299 Parquet Adhesive, shear-resistant



Area of application:

Shear-resistant, 1-component MS parquet adhesive for laying mosaic, on-edge lamella, strip, 10 mm solid wood lam and multi-layer parquet, solid planks, wood block RE/WE as well as cork flooring with HDF/MDF middle layer with tongue and groove resp. click-connection on absorbent and non-absorbent subfloors indoors. WAKOL MS 299 is free from plasticizing substances. WAKOL MS 299 corresponds to DIN EN ISO 17178.

Application method:

trowel notch size according to TKB B3, B11, B13 or B15

Consumption:

approx. 800-1500 g/m²

Airing time:

none

Open time:

approx. 40 minutes

Storage information:

store in a cool and dry place, not sensitive to frost

Base:

MS polymer

Blue Angel:

DE-UZ 113

Order information:

362308 | 42148 – 18.0 kg sealed – Pallet: 44 pieces



WAKOL MS 292 Parquet Adhesive, shear-resistant



Area of application:

Shear-resistant, structure viscous 1-component MS parquet adhesive for the laying of mosaic, on-edge lamella, 10 mm solid wood lam parquet, strip, multi-layer parquet, solid wood planks as well as cork flooring with HDF/MDF middle layer with tongue and groove resp. click-connection on absorbent and non-absorbent subfloors indoors. WAKOL MS 292 is free from plasticizing substances. WAKOL MS 292 corresponds to DIN EN ISO 17178.

Application method:

trowel notch size according to TKB B3, B11, B13 or B15, WAKOL Applicator 90 and WAKOL Replaceable Nozzle

Consumption:

approx. 550-725 ml/m² with WAKOL Replaceable Nozzle, approx. 500-950 ml/m² with WAKOL Parquet Notched Trowel

Airing time:

none

Open time:

approx. 40 minutes

Storage information:

store in a cool and dry place; not sensitive to frost

Base:

MS-Polymer

Order information:

363403 | 35288 – 4.200 ml (Ø88 mm) – pallet: 108 pieces; 54 boxes with 2 pieces



WAKOL MS 290 Parquet Adhesive, shear-resistant



Area of application:

1-component MS parquet adhesive for the shear-resistant laying of mosaic, on-edge lamella, 10 mm solid wood lam parquet, strip, multi-layer parquet, solid planks, wood block RE/WE as well as flat-lying cork flooring and cork flooring with HDF/MDF middle layer with tongue and groove resp. click-connection on absorbent and non-absorbent subfloors indoors. WAKOL MS 290 is free from plasticizing substances. WAKOL MS 290 corresponds to DIN EN ISO 17178.

Application method:

trowel notch size according to TKB B3, B11, B13, B15 (parquet), A2 (cork)

Consumption:

approx. 400-450 g/m² cork approx. 800-1500 g/m² parquet

Airing time:

none

Open time:

approx. 40 minutes

Storage information:

store in a cool and dry place, not sensitive to frost

Base:

MS polymer

Order information:

363707 | 35290 – 18.0 kg sealed – pallet: 44 pieces



WAKOL MS 265 Parquet Adhesive, firm-elastic



Area of application:

Firm-elastic 1-component MS parquet adhesive for laying mosaic, on-edge lamella (min. 16 mm in width, max. 200 mm in length), strip, 10 mm solid wood lam and multi-layer parquet, solid planks (up to max. 18 cm in width, type of wood oak up to max. 20 cm in width), wood block RE/WE as well as flat-lying cork flooring and cork flooring with HDF/MDF middle layer with tongue and groove resp. click-connection on absorbent and non-absorbent subfloors indoors. WAKOL MS 265 is free from plasticizing substances. WAKOL MS 265 corresponds to DIN EN ISO 17178.

Application method:

trowel notch size according to TKB B3, B11, B13 or B15 (parquet), A2 (cork)

Consumption:

approx. 700-1500 g/m² parquet, approx. 400-450 g/m² cork

Airing time:

none

Open time:

approx. 40 minutes

Storage information:

store in a cool and dry place, not sensitive to frost

Base:

MS polymer

Order information:

362203 | 36165 – 18.0 kg sealed – pallet: 44 pieces



WAKOL MS 262 Parquet Adhesive, firm-elastic



Area of application:

Firm-elastic, structure viscous 1-component MS parquet adhesive for laying mosaic, on-edge lamella (min. 16 mm thick, max. 200 mm long), strip, multi-layer parquet, solid wood planks (up to 18 cm in width, oak up to 20 cm wide) as well as cork flooring with HDF/MDF middle layer with tongue and groove resp. click-connection on absorbent and non-absorbent wall and floor areas indoors. WAKOL MS 262 corresponds to DIN EN ISO 17178.

Application method:

trowel notch size according to TKB B3, B11, B13 or B15, tubular bag gun, e.g. WAKOL Applicator 90 or 50 and special application nozzle or WAKOL Replaceable Nozzles

Consumption:

approx. 450-500 ml/m² combining WAKOL TS 160/TS 170; approx. 600-800 ml/m² strip application, approx. 500-950 ml/m² with WAKOL Parquet Notched Trowel; approx. 425-850 ml/m² WAKOL Replaceable Nozzles

Airing time:

none

Open time:

approx. 40 minutes

Storage information:

store in a cool and dry place; not sensitive to frost

Base:

MS-Polymer

Order information:

363207 | 30111 – 600 ml (Ø49 mm) – pallet: 864 pieces; 72 boxes with 12 pieces
363206 | 30112 – 1.800 ml (Ø62 mm) – pallet: 216 pieces; 36 boxes with 6 pieces
363205 | 32219 – 4.200 ml (Ø88 mm) – pallet: 108 pieces; 54 boxes with 2 pieces
363210 | 35296 – 18.0 kg sealed – pallet: 44 pieces



WAKOL MS 261 Parquet Adhesive, firm-elastic



Area of application:

Firm-elastic 1-component MS parquet adhesive for laying mosaic, on-edge lamella (min. 16 mm in width, max. 200 mm in length), strip, 10 mm solid wood lam and multi-layer parquet, solid planks (up to max. 18 cm in width, type of wood oak up to max. 20 cm in width), wood block RE/WE as well as cork flooring with HDF/MDF middle layer with tongue and groove resp. click-connection on absorbent and non-absorbent subfloors indoors. WAKOL MS 261 corresponds to DIN EN ISO 17178.

Application method:

trowel notch size according to TKB B3, B11, B13 or B15, WAKOL Speciality Trowel 5 or WAKOL Speciality Trowel Blade 5

Consumption:

approx. 700-1500 g/m²; approx. 1700-1800 g/m² with WAKOL Speciality Trowel 5 or WAKOL Speciality Trowel Blade 5

Airing time:

none

Open time:

approx. 90 minutes

Storage information:

store in a cool and dry place, not sensitive to frost

Base:

MS polymer

Order information:

362407 | 35298 – 18.0 kg sealed – Pallet: 44 pieces



WAKOL MS 260 Parquet Adhesive, firm-elastic



Area of application:

Firm-elastic 1-component MS parquet adhesive for laying mosaic, on-edge lamella (min. 16 mm in width, max. 200 mm in length), strip, 10 mm solid wood lam parquet, multi-layer parquet, solid planks (up to max. 18 cm in width, type of wood oak up to max. 20 cm in width), wood block RE/WE as well as flatlying cork flooring and cork flooring with HDF/MDF middle layer with tongue and groove resp. click-connection on absorbent and non-absorbent subfloors indoors. WAKOL MS 260 corresponds to DIN EN ISO 17178.

Application method:

trowel notch size according to TKB B3, B11, B13 or B15 (parquet), A2 (cork), WAKOL Speciality Trowel 5, WAKOL Speciality Trowel Blade 5

Consumption:

approx. 700-1500 g/m² parquet approx. 400-450 g/m² cork approx. 1700-1800 g/m² with WAKOL Speciality Trowel 5 or WAKOL Speciality Trowel Blade 5

Airing time:

none

Open time:

approx. 40 minutes

Storage information:

store in a cool and dry place, not sensitive to frost

Base:

MS polymer

Order information:

362007 | 41338 – 18.0 kg sealed – pallet: 44 pieces



WAKOL MS 232 Parquet Adhesive, elastic



Area of application:

Elastic, structure viscous 1-component MS parquet adhesive for laying of on-edge lamella parquet (min. 22 mm thick, max. 200 mm long), strip parquet (22 mm, type of wood oak) and multi-layer parquet on absorbent and non-absorbent subfloors indoors. WAKOL MS 232 corresponds to DIN EN ISO 17178.

Application method:

trowel notch size according to TKB B3, B11, B13 or B15, WAKOL Applicator 90 and WAKOL Replaceable Nozzle

Consumption:

approx. 550-725 ml/m² with WAKOL Replaceable Nozzle, approx. 500-800 ml/m² with WAKOL Parquet Notched Trowel

Airing time:

none

Open time:

approx. 40 minutes

Storage information:

store in a cool and dry place, not sensitive to frost

Base:

MS-Polymer

Order information:

363303 | 35303 – 4.200 ml (Ø88 mm) – pallet: 108 pieces;
54 pieces with 2 pieces
363304 | 35304 – 1.800 ml (Ø62 mm) – pallet: 216 pieces;
36 boxes with 6 pieces
363305 | 35305 – 600 ml (Ø49 mm) – pallet: 864 pieces;
72 boxes with 12 pieces



WAKOL MS 230 Parquet Adhesive, elastic



Area of application:

Elastic 1-component MS parquet adhesive for laying mosaic, on-edge lamella parquet (min. 16 mm in width, max. 200 mm in length), strip flooring parquet (max. 80 mm in width, max. 600 mm in length), as well as multi-layered parquet on absorbent and non-absorbent subfloors indoors. WAKOL MS 230 corresponds to DIN EN ISO 17178.

Application method:

trowel notch size according to TKB B3, B11, B13 or B15, WAKOL Speciality Trowel 5 or WAKOL Speciality Trowel Blade 5

Consumption:

approx. 700-1300 g/m² with trowel notch, approx. 1700-1800 g/m² with WAKOL Speciality Trowel 5 or WAKOL Speciality Trowel Blade 5

Airing time:

none

Open time:

approx. 40 minutes

Storage information:

store in a cool and dry place, not sensitive to frost

Base:

MS polymer

Order information:

363507 | 35307 – 18.0 kg sealed – pallet: 44 pieces



WAKOL MS 228 Ready-to-lay Parquet Adhesive, elastic



Area of application:

Elastic 1-component MS parquet adhesive for laying on multi-layer parquet on absorbent and non-absorbent subfloors. WAKOL MS 228 corresponds to DIN EN ISO 17178.

Application method:

trowel notch size according to TKB B3, B5, B11, B13 or B15; WAKOL Speciality Trowel 5 or WAKOL Speciality Trowel Blade 5

Consumption:

approx. 800-1500 g/m² with trowel notch, approx. 1700-1800 g/m² with WAKOL Speciality Trowel 5 or WAKOL Speciality Trowel Blade 5

Airing time:

none

Open time:

approx. 40 minutes

Storage information:

store in a cool and dry place; not sensitive to frost

Base:

MS polymer

Order information:

362803 | 35310 – 18.0 kg sealed – pallet: 44 pieces



WAKOL PU 385 Parquet Adhesive, shear-resistant



Area of application:

Shear-resistant, 1-component PU parquet adhesive for laying of on-edge lamella parquet (min. 22 mm in width), strip and multi-layer parquet, solid wood planks, wood block RE/WE as well as cork flooring with HDF/MDF middle layer with tongue and groove resp. click-connection on absorbent and non-absorbent subfloors. WAKOL PU 385 corresponds to DIN EN ISO 17178.

Application method:

trowel notch size according to TKB B3, B11, B13 or B15

Consumption:

approx. 750-1450 g/m²

Airing time:

none

Open time:

approx. 40 minutes

Storage information:

store in a cool place, not sensitive to frost

Base:

polyurethane resin

Order information:

367102 | 35176 – 16.0 kg sealed – pallet: 44 pieces



WAKOL PU 210 Parquet Adhesive



Area of application:

Shear-resistant, 2-component PU parquet adhesive for laying of mosaic, on-edge lamella, strip, multi-layer and 10 mm solid wood lam parquet, solid wood planks, wood block RE/WE as well as for approved stratified flooring on absorbent and non-absorbent subfloors. WAKOL PU 210 corresponds to DIN EN ISO 17178.

Application method:

trowel notch size according to TKB B3, B11, B13 or B15

Consumption:

approx. 700-1500 g/m²

Airing time:

none

Open time:

approx. 60-90 minutes

Pot life:

approx. 60-70 minutes

Storage information:

not below +5 °C, sensitive to frost

Base:

polyurethane resin

Order information:

368332 + 368432 | 41255 – combination pack 6.0 kg
A-comp. + 0.9 kg B-comp. – pallet: 60 pieces
368330 | 42295 – 8.0 kg A-comp. – pallet: 60 pieces
368430 | 42296 – 1.2 kg B-comp. – pallet: 60 pieces;
5 boxes with 12 pieces



WAKOL PU 225 Parquet Adhesive



Area of application:

Shear-resistant, 2-component PU parquet adhesive for laying of mosaic, on-edge lamella, strip, multi-layer and 10 mm solid wood lam parquet, solid wood planks, wood block RE/WE as well as for approved stratified flooring on absorbent and non-absorbent subfloors. WAKOL PU 225 corresponds to DIN EN ISO 17178.

Application method:

trowel notch size according to TKB B3, B11, B13 or B15

Consumption:

approx. 800-1500 g/m²

Airing time:

none

Open time:

approx. 50 minutes

Pot life:

approx. 35-40 minutes

Storage information:

not below +5 °C, sensitive to frost

Base:

polyurethane resin

Order information:

368603 | 41340 – 8.9 kg A-Comp. – pallet: 44 pieces
368703 | 41341 – 1.1 kg B-Comp. – pallet: 440 pieces;
40 boxes with 11 pieces
368604 + 368704 | 41256 – combination pack 6.0 kg A-comp. + 0.75 kg B-comp. – pallet: 60 pieces



WAKOL PU 220 Parquet Adhesive



Area of application:

Shear-resistant, 2-component PU parquet adhesive for laying of 10 mm solid wood lam parquet flooring, mosaic parquet, on-edge lamella parquet, strip parquet, multi-layer parquet, solid wood planks, wood-block RE/WE on absorbent and non-absorbent subfloors indoors. WAKOL PU 220 corresponds to DIN EN ISO 17178.

Application method:

trowel notch size according to TKB B3, B11, B13 or B15

Consumption:

approx. 750-1500 g/m²

Airing time:

none

Open time:

approx. 130 minutes

Pot life:

approx. 100 minutes

Storage information:

not below +5°C, sensitive to frost

Base:

polyurethane resin

Order information:

368105 | 35193 – 12.0 kg A-comp. – pallet: 44 pieces
368905 | 35192 – 1.12 kg B-comp. – pallet: 440 pieces;
40 boxes with 11 pieces



WAKOL PU 216 Parquet Adhesive



Area of application:

Shear-resistant, 2-component PU parquet adhesive for laying of mosaic, on-edge lamella, strip, multi-layer and 10 mm solid wood lam parquet, solid wood planks as well as wood block RE/WE on absorbent and non-absorbent subfloors indoors. WAKOL PU 216 corresponds to DIN EN ISO 17178.

Application method:

trowel notch size according to TKB B3, B11, B13 or B15

Consumption:

approx. 750-1500 g/m²

Airing time:

none

Open time:

approx. 70 minutes

Pot life:

approx. 35-40 minutes

Storage information:

not below +5 °C, sensitive to frost

Base:

polyurethane resin

Order information:

369005 | 35196 – 7.0 kg A-comp. – pallet: 60 pieces
368405 | 35195 – 0.75 kg B-comp. – pallet: 60 pieces;
5 boxes with 12 pieces
369003 | 35197 – 11.0 kg A-Comp. – pallet: 44 pieces
368413 | 35194 – 1.19 kg B-Comp. – pallet: 440 pieces;
40 boxes with 11 pieces



WAKOL PU 215 Parquet Adhesive



Area of application:

Shear-resistant, 2-component PU parquet adhesive for laying of 10 mm solid wood lam parquet flooring, mosaic parquet, on-edge lamella parquet, strip parquet, multi-layer parquet, solid wood planks, wood-block RE/WE on absorbent and non-absorbent subfloors indoors. WAKOL PU 215 corresponds to DIN EN ISO 17178.

Application method:

trowel notch size according to TKB B3, B11, B13 or B15

Consumption:

approx. 750-1550 g/m²

Airing time:

none

Open time:

approx. 90 minutes

Pot life:

approx. 80 minutes

Storage information:

not below +5 °C, sensitive to frost

Base:

polyurethane resin

Order information:

368803 | 35201 – 12.0 kg A-comp. – pallet: 44 pieces
368403 | 35198 – 1.12 kg B-comp. – pallet: 440 pieces;
40 boxes with 11 pieces
368804 | 35200 – 8.0 kg A-comp. – pallet: 60 pieces
368404 | 35195 – 0.75 kg B-comp. – pallet: 60 pieces;
5 boxes with 12 pieces



WAKOL D 3513 Cork Pre-Coating



Area of application:

Latex adhesive for machine-operated pre-coating of natural cork flooring that is to be laid by contact procedure. WAKOL D 3513 may be used only in combination with WAKOL D 3540 Cork Contact Adhesive. Pre-coating is possible up to 6 months prior to laying.

Application method:

roller application with suitable machine on the back of the floor covering

Consumption:

approx. 80-100 g/m²

Airing time:

approx. 60 minutes

Open time:

approx. 60-90 minutes

Storage information:

not below +5 °C, sensitive to frost

Base:

natural latex

Order information:

351309 | 39133 – 10.0 kg – pallet: 60 pieces



WAKOL D 3540 Cork Contact Adhesive



Area of application:

Latex adhesive for laying cork tiles according to DIN EN 12104 with non-treated or treated surface on absorbent and non-absorbent subfloors. Also suitable for cork wall coverings and laying carpets on steps. WAKOL D 3540 corresponds to DIN EN ISO 22636.

Application method:

WAKOL Primer Roller or velour roller on cork wall coverings, for carpet flooring with brush or trowel notch size according to TKB A1, A2 or A3

Consumption:

minimum 250 g/m² for laying cork, otherwise 150-650 g/m²

Airing time:

approx. 30-45 minutes on absorbent subfloors, approx. 60-90 minutes on non-absorbent subfloors and on the back of the floor covering

Open time:

approx. 120-180 minutes, with pre-coating approx. 60-90 minutes

Storage information:

not below +5 °C, sensitive to frost

Base:

latex/acrylate dispersion

Order information:

354008 | 30100 – 5.0 kg – pallet: 80 pieces
354009 | 38506 – 2.5 kg – pallet: 120 pieces
354010 | 35827 – 0.8 kg – pallet: 384 pieces; 32 boxes with 12 pieces



WAKOL D 1640 Parquet Adhesive



Area of application:

Shear-resistant dispersion parquet adhesive for laying of mosaic, on-edge lamella parquet (min. 16 mm in width, max. 200 mm in length) and strip parquet in oak as well as multi-layer parquet up to 220 cm length on new, good absorbent cement screeds which are in accordance with the standard. WAKOL D 1640 corresponds to DIN EN ISO 17178.

Application method:

trowel notch size according to TKB B3, B11 or B13

Consumption:

approx. 700-1300 g/m²

Airing time:

none

Open time:

approx. 10-15 minutes

Storage information:

not below +5 °C, sensitive to frost

Base:

synthetic resin dispersion

Order information:

321704 | 24476 – 14.0 kg – pallet: 44 pieces



WAKOL D 1690 Parquet Adhesive



Area of application:

Shear-resistant dispersion parquet adhesive for laying of mosaic, on-edge lamella parquet (min. 16 mm in width, max. 200 mm in length) and strip parquet in oak as well as multi-layer parquet on absorbent subfloors. WAKOL D 1690 corresponds to DIN EN ISO 17178.

Application method:

trowel notch size according to TKB B3 or B11

Consumption:

approx. 700-1100 g/m²

Airing time:

none

Open time:

approx. 15 minutes

Storage information:

not below +5 °C, sensitive to frost

Base:

synthetic resin dispersion

Blue Angel:

DE-UZ 113

Order information:

322203 | 35903 – 14,0 kg – pallet: 44 pieces



WAKOL D 6085 Wood Glue



Area of application:

Wood glue for all heavy-duty requirements such as mortise, dowel and joint gluing. WAKOL D 6085 is especially suited for the tongue and groove engineered flooring gluing of ready-to-lay parquet, flooring stratifié and chipboard. WAKOL D 6085 corresponds to load class D 3.

Application method:

for surface bonding with notched trowel for matchboard gluing with sprayer nozzle of the glue bottle

Consumption:

approx. 150-200 g/m², with Wood Glue bottle approx. 15-20 g/running meter for matchboard gluing

Airing time:

none

Open time:

approx. 6 minutes

Storage information:

not below +5 °C, sensitive to frost

Base:

synthetic resin dispersion

Order information:

316307 | 35656 – 0.75 kg – pallet: 480 pieces; 80 boxes with 6 pieces



WAKOL MS 335 Repair Resin



Area of application:

Fast-curing, silane modified repair resin for restoring hollow spots in parquet floors. WAKOL MS 335 Repair Resin can be applied independently from the used parquet adhesive.

Hardening time:

approx. 2 hours

Storage information:

store in a cool and dry place; not sensitive to frost

Base:

MS polymer

Order information:

361503 | 35282 – 0.6 kg – pallet: 308 pieces; 77 boxes with 4 pieces



WAKOL PU 4519 2K-PU Accelerator



Area of application:

Accelerator for increasing the reaction speed of two-component polyurethane adhesives.

Dosage:

1-5 caps of 15 ml depending on the product and the required acceleration

Storage information:

store in a cool and dry place, not sensitive to frost

Base:

polyurethane catalyst

Order information:

451906 | 35157 – 0.9 kg – pallet: 320 pieces



WAKOL PK 4535 Colour Paste, brown



Area of application:

Brown colour paste to stain all kind of Wakol MS-parquet adhesives, Wakol polyurethane adhesives and Wakol dispersion adhesives.

Dosage:

1-2 tubes per packaging Wakol parquet adhesive

Storage information:

not below +5 °C, sensitive to frost

Base:

pigment concentrate

Order information:

453505 | 30117 – 0.15 kg (brown) – pallet: 1.950 pieces; 195 boxes with 10 pieces



WAKOL D 3110 Modular Flooring Fixation



Area of application:

Dispersion-based fixation for laying modular textile flooring, self-laying LVT flooring and CV flooring without the function of multiple replacements on absorbent and non-absorbent subfloors.

Application method:

WAKOL Primer Roller or velour roller

Consumption:

approx. 80-120 g/m² with roller

Airing time:

approx. 20 minutes on absorbent subfloors, approx. 35 minutes on non-absorbent subfloors

Open time:

approx. 24 hours

Storage information:

not below +5 °C, sensitive to frost

Base:

acrylate dispersion

Order information:

311003 | 35887 – 11.0 kg – pallet: 40 pieces



WAKOL D 3202 Universal Fixation



Area of application:

Dispersion-based fixation for laying CV flooring as well as textile flooring with latex foam backing or synthetic double backing on existing floor coverings, levelled concrete subfloors and P4 to P7 chipboard. Fixed covering can be removed again without damage to the subfloors.

Application method:

trowel notch size according to TKB A2, WAKOL Primer Roller or velour roller

Consumption:

approx. 200-300 g/m²

Airing time:

approx. 10-20 minutes on absorbent subfloors, approx. 45-60 minutes on non-absorbent subfloors

Open time:

approx. 20-30 minutes

Storage information:

not below +5 °C, sensitive to frost

Base:

acrylate dispersion

Blue Angel:

DE-UZ 113

Order information:

320203 | 35876 – 12.0 kg – pallet: 40 pieces
320205 | 35875 – 3.0 kg – pallet: 120 pieces



WAKOL D 3201 VliesFix



Area of application:

Dispersion-based fixation for laying dimensionally stable textile flooring with fleece backing and approved by the manufacturer for fixation, on smooth, existing floor coverings, levelled subfloors and P4 to P7 chipboard in living areas. Fixed covering can be easily removed without damage to the subfloors.

Application method:

WAKOL Primer Roller or velour roller

Consumption:

approx. 120 g/m²

Airing time:

approx. 10-15 minutes on absorbent subfloors, approx. 20-30 minutes on dense subfloors

Open time:

approx. 30 minutes

Storage information:

not below +5 °C; sensitive to frost

Base:

acrylate dispersion

Order information:

320103 | 35879 – 12.0 kg – pallet: 40 pieces
320105 | 35878 – 3.0 kg – pallet: 120 pieces



WAKOL D 965 Tackifier Dispersion



Area of application:

Tackifier dispersion for anti-slip laying of self-laying carpet tiles with bitumen/fleece, PVC or PUR backing on absorbent and non-absorbent subfloors. For conductive laying, mix WAKOL D 965 with WAKOL DL 352 Conductive Dispersion in a ratio of 4 : 1.

Application method:

WAKOL Primer Roller or velour roller

Consumption:

approx. 80-150 g/m²

Airing time:

approx. 30-60 minutes

Open time:

approx. 24 hours

Storage information:

not below +5 °C, sensitive to frost

Base:

synthetic resin dispersion

Order information:

310203 | 37061 – 10.0 kg – pallet: 40 pieces



LAYING CONDUCTIVE FLOORING

WAKOL DL 3078 Conductive Primer



Area of application:

Ready-to-use conductive dispersion-based primer for subsequent conductive laying of textile and elastic flooring. WAKOL DL 3078 replaces the laying of a copper band net.

Application method:

WAKOL Primer Roller

Consumption:

approx. 120-150 g/m²

Drying time:

approx. 3-5 hours

Storage information:

not below +5 °C, sensitive to frost

Base:

acrylate dispersion

Order information:

307803 | 25687 – 10.0 kg – pallet: 60 pieces



WAKOL DL 3365 StarLeit



Area of application:

Light-coloured, fibre-containing dispersion adhesive for the laying of conductive PVC, textile and linoleum flooring as well as for conductive caoutchouc flooring of thickness up to 4 mm on appropriately prepared subfloors. WAKOL DL 3365 corresponds to DIN EN ISO 22636.

Application method:

trowel notch size according to TKB S2, Pajarito 7 or Pajarito 25; trowel notch enclosed

Consumption:

approx. 250-550 g/m²

Airing time:

approx. 10-15 minutes

Open time:

approx. 20-40 minutes

Storage information:

not below +5 °C, sensitive to frost

Base:

acrylate dispersion

Order information:

336504 | 30098 – 12.0 kg – pallet: 40 pieces



WAKOL D 965 Tackifier Dispersion



Area of application:

Tackifier dispersion for anti-slip laying of self-laying carpet tiles with bitumen/fleece, PVC or PUR backing on absorbent and non-absorbent subfloors. For conductive laying, mix WAKOL D 965 with WAKOL DL 352 Conductive Dispersion in a ratio of 4 :1.

Application method:

WAKOL Primer Roller or velour roller

Consumption:

approx. 80-150 g/m²

Airing time:

approx. 30-60 minutes

Open time:

approx. 24 hours

Storage information:

not below +5 °C, sensitive to frost

Base:

synthetic resin dispersion

Order information:

310203 | 37061 – 10.0 kg – pallet: 40 pieces



WAKOL DL 352 Conductive Dispersion



Area of application:

Conductive dispersion in combination with WAKOL D 965 Tackifier Dispersion for producing a conductive slip brake for appropriately equipped carpet tiles.

Mixture:

4 parts WAKOL D 965 + 1 part WAKOL DL 352

Usage:

only in combination with WAKOL D 965

Storage information:

not below +5 °C, sensitive to frost

Base:

special carbon black

Order information:

450102 | 35644 – 5.0 kg – palette: 60 pieces



WAKOL AS 130 Seaming Tape



Area of application:

Polyester fleece tape for bonding artificial grass sheets with each other in joint sections indoors and outdoors.

Laying:

in the system with WAKOL PU 272

Consumption:

corresponding to the joint length

Storage information:

not sensitive to frost

Base:

polyester fleece

Order information:

595612 | 41374 – Roll 100 m, 300 mm wide – pallet: 80 pieces; 16 boxes with 5 pieces

WAKOL AS 151 Sealing Sheet



Area of application:

System component for waterproofing wet areas in domestic area (Class W1 and W2) under parquet and resilient flooring.

Laying:

glued over the entire surface, with sheets closely abutting one another

Consumption:

corresponding to the room size

Storage information:

store roll upright, not sensitive to frost

Base:

polypropylene fleece

Order information:

595602 | 35031 – Roll 20 m, 1 m wide, 0,5 mm thick – pallet: 24 pieces; 24 boxes with 1 piece



WAKOL AS 152 Sealing Tape



Area of application:

System component for waterproofing wet areas in domestic area (Class W1 and W2) under parquet and resilient flooring.

Laying:

glued over the entire surface, in the system with WAKOL AS 151

Consumption:

corresponding to the room size

Storage information:

not sensitive to frost

Base:

polypropylene fleece

Order information:

595603 | 35030 – Roll 50 m, 120 mm wide – pallet: 120 pieces; 120 boxes with 1 piece



WAKOL AS 153 Sealing Corners, inner


Area of application:

System component for waterproofing wet areas in domestic area (Class W1 and W2) under parquet and resilient flooring.

Laying:

glued over the entire surface, in the system with WAKOL AS 151

Consumption:

1 pc. per inner corner

Storage information:

not sensitive to frost

Base:

polypropylene fleece

Order information:

595604 | 35029 – 5 pieces - each 119 x 119 x 60 mm – pallet: 2.000 pieces; 400 boxes with 5 pieces



WAKOL AS 156 Sealing Collar, large


Area of application:

Polyethylene foil on both sides laminated with polypropylene fleece for feedthrough of water pipes with 65-200 mm diameter.
System component for waterproofing wet areas in domestic area (Class W1 and W2) under parquet and resilient flooring.

Laying:

glued over the entire surface, in the system with WAKOL AS 151

Consumption:

1 pc. per feedthrough

Storage information:

not sensitive to frost

Base:

polypropylene fleece

Order information:

595607 | 41667 – 5 pieces - each 425 x 425 mm – pallet: 1.000 pieces; 200 boxes with 5 pieces



WAKOL AS 154 Sealing Corners, outer


Area of application:

System component for waterproofing wet areas in domestic area (Class W1 and W2) under parquet and resilient flooring.

Laying:

glued over the entire surface, in the system with WAKOL AS 151

Consumption:

1 pc. per outer corner

Storage information:

not sensitive to frost

Base:

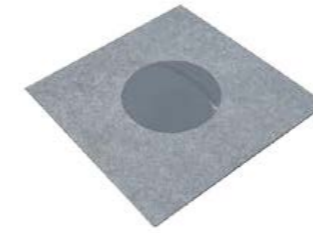
polypropylene fleece

Order information:

595605 | 35028 – 5 pieces - each 115 x 115 x 60 mm – pallet: 2.000 pieces; 400 boxes with 5 pieces



WAKOL AS 157 Stretch Collar


Area of application:

Polyethylene foil on both sides laminated with polypropylene fleece for feedthrough of water pipes with 40-65 mm diameter.
System component for waterproofing wet areas in domestic area (Class W1 and W2) under parquet and resilient flooring.

Laying:

glued over the entire surface, in the system with WAKOL AS 151

Consumption:

1 pc. per feedthrough

Storage information:

not sensitive to frost

Base:

polypropylene fleece

Order information:

595608 | 41668 – 5 pieces - each 150 x 150 mm – pallet: 500 pieces; 100 boxes with 5 pieces



WAKOL AS 155 Sealing Collar, small


Area of application:

Polyethylene foil on both sides laminated with polypropylene fleece for feedthrough of water pipes with 15-30 mm diameter.
System component for waterproofing wet areas in domestic area (Class W1 and W2) under parquet and resilient flooring.

Laying:

glued over the entire surface, in the system with WAKOL AS 151

Consumption:

1 pc. per feedthrough

Storage information:

not sensitive to frost

Base:

polypropylene fleece

Order information:

595606 | 41666 – 5 pieces - each 140 x 140 mm – pallet: 500 pieces; 100 boxes with 5 pieces



WAKOL AR 115 Reinforcement Fibre Sheet



Area of application:

Alkali-resistant fibreglass mat for reinforcing approved, self-flowing Wakol levelling compounds for use on cracked and slightly vibrating subfloors without counter movements, crack width up to max. 3 mm, old mineral subfloors, wooden subfloors, screed damages and mixed subfloors indoors.

Laying:

overlapping sheets

Consumption:

corresponding to the room size

Storage information:

store in a cool and dry place, not sensitive to frost

Base:

fibre glass fabric

Order information:

595506 | 36013 – Roll 100 m, 0.90 m wide – pallet: 24 pieces

WAKOL EM 140 Uncoupling Fleece



Area of application:

Light green polyester fleece for decoupling and low tension reinforcement under bonded parquet indoors also appropriate for applying a levelling layer before bonding textile and elastic flooring.

Laying:

completely cover, with sheets closely abutting one another

Consumption:

corresponding to the room size

Storage information:

store roll upright, not sensitive to frost

Base:

polyester fleece

Order information:

590303 | 41705 – Roll 50 m, 1 m wide, 1,1 mm tick – pallet: 12 pieces



WAKOL AR 116 Refurbishment Fibre Sheet



Area of application:

Alkali-resistant fibreglass strips laminated on backing fleece for the usage on cracks and joints in subfloors without counter movements up to maximum 5 mm width instead of force-fit connection, screed damages and mixed subfloors indoors.

Laying:

partially over affected areas

Consumption:

corresponding to the areas to be renovated

Storage information:

store in a cool and dry place, not sensitive to frost

Base:

fibre glass fabric

Order information:

595507 | 36014 – Roll 45 m, 0.80 m wide – pallet: 24 pieces

WAKOL RP 104 Decoupling Sheet, 4 mm



Area of application:

Polyester fibre sheet for decoupling and soundproofing reduction under bonded parquet indoors also appropriate for applying a levelling layer before bonding textile and elastic flooring.

Laying:

completely cover, with sheets closely abutting one another

Consumption:

corresponding to the room size

Footfall sound reduction (as per DIN EN ISO

10140-3): depends on top covering, e.g. approx. 13 dB with 10 mm parquet

Storage information:

store boxes flat, not sensitive to frost

Base:

polyester fibre mixture

Order information:

590402 | 34984 – 15 sheets - each 100 x 60 cm, 4 mm thick – pallet: 150 pieces; 10 boxes with 15 pieces



WAKOL AR 150 Reinforcement Fabric



Area of application:

Alkali-resistant fibreglass fabric for reinforcing levelling compounds on inhomogeneous subfloors, wood planks and wood product tile subfloors as well as in sports facility construction in systems with WAKOL D 3060 Plastification Additive and Wakol levelling compound.

Laying:

overlapping sheets, fixed on the subfloor

Consumption:

corresponding to the room size

Storage information:

store roll upright, not sensitive to frost

Base:

fibre glass fabric

Order information:

595502 | 35032 – Roll 50 m, 1 m wide – pallet: 30 pieces

WAKOL RP 107 Decoupling Sheet, 7 mm



Area of application:

Polyester fibre sheet for decoupling and soundproofing reduction under bonded parquet indoors also appropriate for applying a levelling layer before bonding textile and elastic flooring.

Laying:

completely cover, with sheets closely abutting one another

Consumption:

one after the other corresponding to the room size

Footfall sound reduction (as per DIN EN ISO

10140-3): depending on the top covering, e.g. approx. 14 dB with 10 mm of parquet

Storage information:

store boxes flat, not sensitive to frost

Base:

polyester fibre mixture

Order information:

590907 | 34983 – 9 sheets - each 100 x 60 cm, 7 mm thick – pallet: 90 pieces; 10 boxes with 9 pieces



WAKOL RP 109 Decoupling Sheet, 9 mm



Area of application:

Polyester fibre sheet for decoupling and soundproofing reduction under bonded parquet indoors also appropriate for applying a levelling layer before bonding textile and elastic flooring.

Laying:

completely cover, with sheets closely abutting one another

Consumption:

corresponding to the room size

Footfall sound reduction (as per DIN EN ISO

10140-3):

depends on top covering, e.g. approx. 14 dB with 10 mm parquet

Storage information:

store boxes flat, not sensitive to frost

Base:

polyester fibre mixture

Order information:

590502 | 34982 – 10 sheets - each 100 x 60 cm, 9 mm thick – pallet: 100 pieces; 10 boxes with 10 pieces



WAKOL RP 115 Decoupling Sheet, 15 mm



Area of application:

Polyester fibre sheet for decoupling and soundproofing reduction under bonded parquet indoors also appropriate for applying a levelling layer before bonding textile and elastic flooring.

Laying:

completely cover, with sheets closely abutting one another

Consumption:

corresponding to the room size

Footfall sound reduction (as per DIN EN ISO

10140-3):

depends on top covering, e.g. approx. 14 dB with 10 mm parquet

Storage information:

store boxes flat, not sensitive to frost

Base:

polyester fibre mixture

Order information:

590802 | 34981 – 6 sheets - each 100 x 60 cm, 15 mm thick – pallet: 60 pieces; 10 boxes with 6 pieces



WAKOL RP 704 Project Decoupling Sheet, 4 mm



Area of application:

Polyester fibre sheet for decoupling and soundproofing reduction under bonded parquet indoors also appropriate for applying a levelling layer before bonding textile and elastic flooring.

Laying:

completely cover, with sheets closely abutting one another

Consumption:

corresponding to the room size

Footfall sound reduction (as per DIN EN ISO

10140-3):

depends on top covering, e.g. approx. 13 dB with 10 mm parquet

Storage information:

store boxes flat, not sensitive to frost

Base:

polyester fibre mixture

Order information:

590474 | 34980 – 15 sheets - each 100 x 60 cm, 4 mm thick – pallet: 150 pieces; 10 boxes with 15 pieces



WAKOL RP 709 Project Decoupling Sheet, 9 mm



Area of application:

Polyester fibre sheet for decoupling and soundproofing reduction under bonded parquet indoors. Also appropriate for applying a levelling layer before bonding textile and elastic flooring.

Laying:

completely cover, with sheets closely abutting one another

Consumption:

corresponding to the room size

Footfall sound reduction (as per DIN EN ISO

10140-3):

depends on top covering, e.g. approx. 14 dB with 10 mm parquet

Storage information:

store boxes flat, not sensitive to frost

Base:

polyester fibre mixture

Order information:

590579 | 36006 – 10 sheets - each 100 x 60 cm, 9 mm thick – pallet: 100 pieces; 10 boxes with 10 pieces



WAKOL RP 715 Project Decoupling Sheet, 15 mm



Area of application:

Polyester fibre sheet for decoupling and soundproofing reduction under bonded parquet indoors. Also appropriate for applying a levelling layer before bonding textile and elastic flooring.

Laying:

completely cover, with sheets closely abutting one another

Consumption:

corresponding to the room size

Footfall sound reduction (as per DIN EN ISO

10140-3):

depends on top covering, e.g. approx. 13 dB with 10 mm parquet

Storage information:

store boxes flat, not sensitive to frost

Base:

polyester fibre mixture

Order information:

590872 | 41372 – 5 sheets - each 100 x 60 cm, 15 mm thick – pallet: 50 pieces; 10 boxes with 5 pieces



WAKOL TS 102 Footfall Soundproofing Mat, 2 mm



Area of application:

Cork/polyurethane foam matting for improving the footfall soundproofing and heat insulation of flooring structures in old and new buildings. WAKOL TS 102 is suitable as soundproofing material under PVC, CV, textile, linoleum and caoutchouc flooring, as well as mosaic parquet (cubes), on edge lamella, strip, multi-layer parquet, wood block RE/WE, solid wood planks (type of wood oak, max. 16 cm in width) and stratified flooring indoors.

Laying:

completely cover, with mats closely abutting one another

Consumption:

corresponding to the room size

Footfall sound reduction (as per DIN EN ISO

10140-3):

19 dB in combination with 10 mm multi-layer parquet, 19 dB in combination with 3 mm PVC, 17 dB in combination with 3 mm rubber

Storage information:

store roll upright, not sensitive to frost

Base:

cork/PU-foam

Order information:

590704 | 39194 – Roll 30 m, 1 m wide, 2 mm thick – pallet: 11 pieces



WAKOL TS 103 Footfall Soundproofing Mat, 3 mm



Area of application:

Cork/polyurethane foam matting for improving the footfall soundproofing and heat insulation of flooring structures in old and new buildings. WAKOL TS 103 is suitable as soundproofing material under PVC, CV, textile, linoleum and caoutchouc flooring, as well as strip, multi-layer parquet, wood block RE/WE, solid wood planks (type of wood oak, max. 16 cm in width) and stratified flooring indoors.

Laying:

completely cover, with mats closely abutting one another

Consumption:

corresponding to the room size

Footfall sound reduction (as per DIN EN ISO 10140-3):

18 dB in combination with 10 mm multi-layer parquet, 20 dB in combination with 3 mm PVC, 17 dB in combination with 3 mm rubber

Storage information:

store roll upright, not sensitive to frost

Base:

cork/PU-foam

Order information:

590705 | 34962 – Roll 35 m, 1 m wide, 3 mm thick – pallet: 6 pieces



WAKOL TS 112 Footfall Soundproofing Mat, 2 mm



Area of application:

Cork/polyurethane foam matting for improving the footfall soundproofing and heat insulation of flooring structures in old and new buildings. WAKOL TS 112 is, according to DIN EN 13501-1 classified with B_{fl,S1} (hardly flammable), and suitable as soundproofing material under PVC, CV, textile, linoleum and caoutchouc flooring, as well as mosaic parquet (cubes), on edge lamella, strip, multi-layer parquet, wood block RE/WE, solid wood planks (type of wood oak, max. 16 cm in width) and stratified flooring indoors.

Laying:

completely cover, with mats closely abutting one another

Consumption:

corresponding to the room size

Reaction to fire (according to ISO 11 925/EN 13 501):

Bfl-S1

Footfall sound reduction (as per DIN EN ISO 10140-3):

19 dB in combination with 10 mm multi-layer parquet

Storage information:

store roll upright, not sensitive to frost

Base:

cork/PU-foam

Order information:

590706 | 34961 – Roll 30 m, 1 m wide, 2 mm thick – pallet: 11 pieces



WAKOL TS 160 Footfall Soundproofing Mat



Area of application:

Polypropylene soundproofing mat with single-sided aluminium lamination for improving the footfall sound insulation. WAKOL TS 160 Footfall Soundproofing Mat has cut-outs for accommodating WAKOL MS 232 Parquet Adhesive, elastic or WAKOL MS 262 Parquet Adhesive, firm-elastic, and is suitable for laying strip parquet and solid wood planks up to max. 18 cm in width and multi-layer parquet as of 90 cm in length indoors.

Laying:

loosely, with the metallic side up

Consumption:

corresponding to the room size

Footfall sound reduction (as per DIN EN ISO 10140-3):

17 dB in combination with 10 mm ready-to-lay parquet

Storage information:

store roll upright, not sensitive to frost

Base:

polypropylene

Order information:

590602 | 25523 – Roll 12 m, 1.25 m wide, 3 mm thick – pallet: 12 pieces



WAKOL TS 170 Footfall Soundproofing Sheet



Area of application:

Natural cork mat for improving footfall sound insulation with cut-outs for accommodating WAKOL MS 232 Parquet Adhesive, elastic or WAKOL MS 262 Parquet Adhesive, firm-elastic, and suitable for laying strip parquet and solid wood planks up to max. 18 cm in width and multi-layer parquet as of 90 cm in length as well as for cork on HDF/MDF carrier with tongue and groove joining or click joining on absorbent and non-absorbent subfloors indoors.

Laying:

loosely, in irregular pattern

Consumption:

corresponding to the room size

Footfall sound reduction (as per DIN EN ISO 10140-3):

15 dB in combination with 14 mm multi-layer parquet

Storage information:

store boxes flat, not sensitive to frost

Base:

natural cork

Order information:

590604 | 34960 – 52 sheets - each 915 x 610mm, 2.5 mm thick – pallet: 1.040 pieces; 20 boxes with 52 pieces



WAKOL UM 110 Blocking Mat



Area of application:

Loosely laid mat with napped backing for blocking excessive residual moisture in cement paving up to max. 5 CM% / 95 corresponding RH %, calcium sulphate concrete up to max. 2 CM% / 85 corresponding RH %, raw concrete ceiling up to max. 7% by weight / 95 corresponding RH %, as well as for uncoupling subfloors not ready for laying and for protecting existing floors for subsequently laying of textile flooring, PVC flooring, CV flooring and LVT flooring in planks indoors.

Laying:

loosely, with sheets closely abutting one another

Consumption:

corresponding to the room size

Storage information:

store roll upright, not sensitive to frost

Base:

fibreglass, bonded

Order information:

591802 | 34959 – 35 m roll, 2 m wide, 1.5 mm thick – pallet: 12 pieces



TOOLS / ACCESSORIES

WAKOL MS 425 Decking Sealant, black



Area of application:

One-component, black-coloured, elastic sealant for grouting full-bonded decking made of wood, such as teak, pitch pine, oak, sipo, as well as synthetic materials (except polyethylene or polypropylene) indoors and outdoors.

Application method:

commercially available tubular bag press or WAKOL Applicator 50

Open time:

approx. 15-20 minutes

Hardening time:

approx. 24 h for 2.5 mm, approx. 48 h for 3.5 mm thickness

Storage information:

not sensitive to frost

Base:

MS polymer

Order information:

366906 | 43984 – 600 ml – pallet: 720 pieces; 60 boxes with 12 pieces



WAKOL L 1806 Adhesion Promoter



RESCODE
RS25

Area of application:

Solvent-based primer to increase the adhesion of WAKOL MS 425 Decking Sealant, black for grouting wooden ship decks indoors and outdoors.

Application method:
brush

Drying time:
min. 15 minutes, max. 4 h

Storage information:
not sensitive to frost

Base:
organic solvent mixture

Order information:
180606 | 43983 – 250 ml – 1 box with 9 pieces

WAKOL RT 5960 Cleaning Cloth



solvent
free

Area of application:

Impregnated towels for cleaning hands, especially if soiled with non-hardened PU adhesives, oils, grease and paint. Also suitable for cleaning tools. Bucket with reclosable removal opening.

Storage information:
store in a cool and dry place, not sensitive to frost

Base:
polyethylene

Order information:
596003 | 36030 – 150 units in bucket – pallet: 120 pieces;
30 boxes with 4 pieces

WAKOL KB 185 Skirting Adhesive Tape, 50 mm



ECT
A+

Area of application:

Tape, on both sides with strong adhesive covered, with yarn core for bonding looped carpet skirting board with different backing formats, soft skirting (up to 60 mm) and rubber skirting (up to 60 mm) indoors.

Storage information:
not sensitive to frost

Base:
polyacrylate with yarn core

Order information:
595712 | 44348 – Roll 50 m, 50 mm wide, 0,23 mm thick –
pallet: 300 pieces; 60 boxes with 5 pieces

WAKOL KB 183 Skirting Adhesive Tape, 35 mm



ECT
A+

Area of application:

Tape, on both sides with strong adhesive covered, with yarn core for bonding solid core skirting, carpet skirting, textile and needle-punch flooring skirting and soft skirting (up to 50 mm) indoors.

Storage information:
not sensitive to frost

Base:
polyacrylate with yarn core

Order information:
595711 | 41703 – Roll 50 m, 35 mm wide, 0,38 mm thick –
pallet: 480 pieces; 60 boxes with 8 pieces

WAKOL RV 105 Neoprene Dilution



Area of application:

For producing a primer from Wakol neoprene adhesives and for cleaning tools.

Mixture:
to produce a primer, mix 1 part WAKOL RV 105 with 1
part contact adhesive

Storage information:
store in a cool and dry place, not sensitive to frost

Base:
organic solvent

Order information:
180306 | 35142 – 4.0 kg – pallet: 126 pieces

WAKOL RS 5945 Edging Strips



Area of application:

Permanently elastic edge stripes with self-adhesive pedestal to be used if thicker levelling layers are required and before installation of WAKOL Z 515 Thin Screed.

Storage information:
not sensitive to frost

Base:
polyethylene

Order information:
594503 | 41706 – Roll 25 m, 50 mm wide, 5 mm thick –
pallet: 48 pieces; 12 boxes with 4 pieces

WAKOL RS 5935 Edging Strips



Area of application:

Self-adhesive, permanently elastic edge strips to be used if thicker levelling layers are required and before installation of WAKOL Z 515 Thin Screed and WAKOL Z 560 Rapid Screed.

Storage information:

not sensitive to frost

Base:

polyethylene

Order information:

593502 | 34979 – Roll 25 m, 50 mm wide, 5 mm thick – pallet: 120 pieces; 12 boxes with 10 pieces



WAKOL MS Special Roller



Area of application:

Polyamide roller for applying WAKOL MS 330 Silane Primer when used as moisture barrier, for priming on strong absorbent subfloors, old subfloors and adhesive residues. Also suitable for applying WAKOL PS 275 Concrete Repair Primer.

Base:

polyamide

Order information:

597312 | 34999 – 2 pieces – pallet: 900 pieces; 10 boxes with 90 pieces



WAKOL Levelling Pin



Area of application:

Self-adhesive plastic pin with a scale from 10-100 mm before levelling with Wakol Levelling Compounds or WAKOL Z 515 Thin Screed.

Consumption:

corresponding to the room size, room geometry and unevenness to be compensated

Storage information:

not sensitive to frost

Base:

synthetic material

Order information:

598202 | 35009 – 50 pieces



WAKOL Dust Reducer



Area of application:

Extraction ring for dust reduction when working with levelling compounds, suitable for WAKOL Stirring Pail. WAKOL Dust Reducer will be delivered with a universal vacuum adapter.

Base:

synthetic material

Order information:

598302 | 37042 – 1 piece – pallet: 150 pieces; 150 boxes with 1 piece



WAKOL Primer Roller, 11 mm



Area of application:

Microfibre roller for easy applying of Wakol primers on absorbent and non-absorbent subfloors. Also suitable for applying Wakol Dispersion contact adhesives and Wakol fixations.

Base:

microfibre

Order information:

597503 | 34958 – 12 pcs with 1 bracket – pallet: 60 pieces



WAKOL Double Paddle Mixer



Area of application:

Double paddle mixer with diameter of 90 mm for the fast and homogeneous mixing of plasticised levelling compound and 2-component PU adhesives.

Base:

steel

Order information:

592315 | 41704 – 1 piece – pallet: 224 pieces



WAKOL Basket Stirrer



Area of application:

Basket stirrer with diameter of 120 mm and blade at basket ring. Equipped with M14 mounting for all current mixers.

Base:
steel

Order information:
592310 | 35004 – 1 piece



WAKOL Raket with Distance Pins, 56 cm



Area of application:

Scraper, 56 cm wide, equipped with distance pins for blade coating, also of higher layer thickness or fibre-reinforced levelling compounds. Can be used with and without trowel blades. Raket blades notched on both sides are available as an accessory. The WAKOL Raket Blade is made from hardened steel and available in the notch sizes TKB R2, TKB R3 and TKB R4.

Base:
steel/synthetic material

Order information:

598403 | 34987 – 1 pcs. Raket 56 cm
598031 | 34985 – TKB R2 56 cm – 1 box with 10 pieces
598032 | 41384 – TKB R3 56 cm – 1 box with 10 pieces
598033 | 41386 – TKB R4 56 cm – 1 box with 10 pieces



WAKOL Airing Roller



Area of application:

Airing roller, 50 cm wide, spike length of 22 mm, with splash protection, for airing and improving flow properties of freshly applied self-flowing Wakol levelling compounds.

Base:
steel/synthetic material

Order information:
597403 | 42243 – 50 cm wide



WAKOL Master Trowel



Area of application:

Ergonomic master trowel, 18 cm or 28 cm wide, for applying Wakol adhesives.

Trowel blades notched on both sides, made from hardened steel, are available as an accessory. The WAKOL Trowel Blade is 18 cm or 28 cm wide. It is available in the notch sizes TKB A1, TKB A2, TKB B1 and TKB B2.

Base:
steel/wood

Order information:

597910 | 34997 – 28 cm – 1 box with 10 pieces each
597903 | 34998 – 18 cm – 1 box with 10 pieces each



WAKOL Raket



Area of application:

56-cm-wide Raket for applying self-flowing Wakol levelling compounds.

Raket blades notched on both sides are available as an accessory. The WAKOL Raket Blade is made from hardened steel and available in the notch sizes TKB R2, TKB R3 and TKB R4.

Base:
steel/wood

Order information:
598402 | 34986 – 1 pcs Raket 56 cm
598031 | 34985 – TKB R2 56 cm – 1 box with 10 pieces
598032 | 41384 – TKB R3 56 cm – 1 box with 10 pieces
598033 | 41386 – TKB R4 56 cm – 1 box with 10 pieces



WAKOL Trowel Blade



Area of application:

Trowel blade notched on both sides, made from hardened steel, used in WAKOL Master Trowel. WAKOL Trowel Blade is available in width of 18 cm or 28 cm and in the notch sizes TKB A1, TKB A2, TKB B1 and TKB B2.

Base:
steel

Order information:

598010 | 34908 – TKB A1 28 cm – 1 box with 10 pieces
598007 | 34909 – TKB A1 18 cm – 1 box with 10 pieces
598011 | 34906 – TKB A2 28 cm – 1 box with 10 pieces
598003 | 34907 – TKB A2 18 cm – 1 box with 10 pieces
598012 | 34904 – TKB B1 28 cm – 1 box with 10 pieces
598002 | 34905 – TKB B1 18 cm – 1 box with 10 pieces
598014 | 34902 – TKB B2 28 cm – 1 box with 10 pieces
598006 | 34903 – TKB B2 18 cm – 1 box with 10 pieces



WAKOL Parquet Notched Trowel



Area of application:

Notched trowel according to TKB for applying Wakol parquet adhesives. WAKOL Parquet Notched Trowels are available in notch sizes TKB B3, TKB B5, TKB B11, TKB B13 and TKB B15 with 18 cm width.

Base:

steel/wood

Order information:

598502 | 34992 – TKB B3 18 cm – 1 box with 10 pieces
 598503 | 34991 – TKB B5 18 cm – 1 box with 10 pieces
 598504 | 34995 – TKB B11 18 cm – 1 box with 10 pieces
 598505 | 34994 – TKB B13 18 cm – 1 box with 10 pieces
 598506 | 34993 – TKB B15 18 cm – 1 box with 10 pieces



WAKOL Replaceable Nozzle



Area of application:

Replaceable nozzles, 200 mm and 400 mm wide, for use in WAKOL Applicator 90, Parkett-X-Press, Parkett-X-Press Air and Lite-X-Press. Appropriate guide brackets in widths of 200 mm and 400 mm are also available.

Order information:

597604 | 34914 – 200-18-3,5 – 1 box with 7 pieces
 597605 | 34915 – 200-11-3,5 – 1 box with 7 pieces
 597624 | 34912 – 400-40-3,5 – 1 box with 5 pieces
 597625 | 34913 – 400-25-3,5 – 1 box with 5 pieces
 597633 | 35018 – 1 pc. Guide Bracket 200 mm
 597635 | 35017 – 1 pc. Guide Bracket 400 mm



WAKOL Notched Trowel



Area of application:

Notched trowel according to TKB for applying Wakol dispersion adhesives. WAKOL Notched Trowels are available in notch sizes TKB A1 and TKB A2 with 25 cm width and in notch sizes TKB B1 and TKB B2 with 18 cm width.

Base:

steel/wood

Order information:

598511 | 34901 – TKB A1 25 cm – 1 box with 10 pieces
 598512 | 34900 – TKB A2 25 cm – 1 box with 10 pieces
 598513 | 42244 – TKB B1 18 cm – 1 box with 10 pieces
 598514 | 42245 – TKB B2 18 cm – 1 box with 10 pieces



WAKOL Applicator 90



Area of application:

Battery-operated sausage gun for applying Wakol adhesives in tubular bags (Ø 88 mm / 4.200 ml), e.g. WAKOL MS 292 Parquet Adhesive, shear-resistant, WAKOL MS 262 Parquet Adhesive, firm-elastic or WAKOL MS 232 Parquet Adhesive, elastic. The WAKOL Applicator 90 comes with a 200 mm distributor head for mounting WAKOL Replaceable Nozzles, a quick-charger and two 18 V rechargeable batteries in the case including a stand.

Weight:

WAKOL Applicator 90 approx. 5.8 kg, incl. case and accessories approx. 14 kg

Delivery:

WAKOL Applicator 90, 200 distributor head, two 18 V li-ion batteries, quick-charger with charging indicator, transport case with stand

Drive:

controllable, 9-stage

Holder:

Aluminium tube for tubular bags, diameter 90 mm

Charging station:

Input: 110 - 240V ~ 50/60Hz 60W
 Output: DC 18V A 3.0A

Safety:

CE certified

Order information:

597632 | 35037 – 1 piece
 597639 | 35040 – 1 pc. rechargeable battery 18 V - 1,5 AH
 597637 | 34971 – 1 pc. quick-charger



WAKOL Speciality Trowel 5



Area of application:

Special notch to form a moisture barrier on unheated cement screeds up to 4 CM% resp. 85 % corresponding relative humidity for laying parquets (all types of parquets with tongue and groove joint) with WAKOL MS 262 Parquet Adhesive, firm-elastic, WAKOL MS 260 Parquet Adhesive, firm-elastic, WAKOL MS 232 Parquet Adhesive, elastic, WAKOL MS 230 Parquet Adhesive, elastic or WAKOL MS 228 Ready-to-lay Parquet Adhesive, elastic. Alternatively, the WAKOL Speciality Trowel Blade 5, 18 cm wide, for use in WAKOL Master Trowel is also available.

Base:

steel/aluminium

Order information:

598602 | 31471 – 1 pcs. Speciality Trowel 18 cm
 598021 | 34968 – Speciality Trowel Blade 18 cm – 1 box with 10 pieces



WAKOL Applicator 50



Area of application:

Battery-operated sausage gun for applying Wakol adhesives in tubular bags (Ø 49 mm/up to 600 ml) and cartridges, e.g. WAKOL MS 262 Parquet Adhesive, firm-elastic, WAKOL MS 232 Parquet Adhesive, elastic, WAKOL MS 246 StarMonti or WAKOL MS 245 Montinator. The WAKOL Applicator 50 comes with a quick-charger and two 10.8 V rechargeable batteries in the case.

Weight:

WAKOL Applicator 50 approx. 2,3 kg; incl. case and accessories approx. 5.3 kg

Delivery:

WAKOL Applicator 50, 2 Li-Ion batteries with 10.8 V, quick-charger with load indicator, carriage case

Drive:

controllable, up to 330 mm/min, automatic return

Holder:

Compound holder 600 ml for tabular bags and cartridges, diameter 50 mm

Charging station:

Input: 100 - 240V ~ 50/60 Hz 30W
 Output: DC 10.8 A 2A charging time approx. 30 min

Safety:

CE certified

Order information:

597603 | 35038 – 1 piece



WAKOL Manual Applicator 400



Area of application:

Manual applicator gun for application of Wakol sausage and cartridge adhesives up to 400 ml filling amount. WAKOL Manual Applicator 400 has an ergonomically designed handle and an optimised transmission for easy mounting adhesive application, such as WAKOL MS 246 StarMonti or WAKOL MS 245 Montinator.

Weight:

WAKOL Manual Applicator 400 approx. 0.814 kg

Holder:

Compound holder 400 ml for tabular bags and cartridges, diameter 40 mm

Order information:

597679 | 36017 – 1 piece



WAKOL Softshell-Jacket



Area of application:

Water-repellent jacket made of 92 % polyester/ 8 % elastane in modern form fitted with two angled side pockets with zipper, two inner pockets and elastic seam cord. Breathable, especially hard-wearing.

Colour:

blue

Size:

S-3XL

Order information:

591232	41375 – S
591233	34937 – M
591234	34938 – L
591235	36007 – XL
591236	41376 – XXL
591237	41377 – 3XL



WAKOL Proportioning Pail



Area of application:

Transparent, graduated proportioning pail (11 l) for easily measuring out water and WAKOL S 25 Elongating Sand. Lid is separately available.

Order information:

590203 | 34923 – 1 pcs. Pail – pallet: 250 pieces
590204 | 35021 – 1 pcs. Lid



WAKOL Work Jacket



Area of application:

Jacket made of 65 % polyester/ 35 % cotton in extended blouson form fitted with convenient snap fasteners, also on the sleeves and with comfortable pleated back. Many pockets – two breast pockets with flaps, two side pockets – make the jacket a practical item of clothing. Breathable, especially hard-wearing.

Colour:

black/grey

Size:

42-64; 90-110; 24-29

Order information:

591212 | 34957 – 1 piece



WAKOL Stirring Pail



Area of application:

Stirring pail (30 l) with firm rim and handle shell for mixing all Wakol levelling compounds.

Order information:

590102 | 35039 – 1 piece – pallet: 240 pieces



WAKOL Waistband Trousers



Area of application:

High-quality waistband trousers made of 65 % polyester/ 35 % cotton with knee area reinforced due to additionally fitted knee pockets. Many pockets – one pouch and two back pockets with flaps and snap fasteners – make the trousers a practical item of clothing. Breathable, especially hard-wearing.

Colour:

black/ grey

Size:

42-64; 90-110; 24-29

Order information:

591128	34956 – 44
591127	34955 – 46
591126	34954 – 48
591125	34953 – 50
591124	34952 – 52
591123	34951 – 54
591122	34950 – 56
591121	34949 – special sizes



WAKOL Dungarees



Area of application:

Dungarees made of 65 % polyester/ 35 % cotton for the highest quality demands. Especially hard-wearing, breathable, for good body temperature. 2 fitted pouch pockets made of Cordura, on right double folding rule pocket, reflective piping on pocket openings and flaps, on left thigh pocket with flap and snap fasteners, fitted mobile phone pocket, double bib pocket, reinforced rear pocket. Reverse of fabric slightly roughened, very breathable, especially hard-wearing.

Colour:
black/grey

Size:
42-64; 90-110; 24-29

Order information:

591002 | 41580 – 44
591003 | 42023 – 46
591004 | 34921 – 48
591005 | 34920 – 50
591006 | 34919 – 52
591007 | 34918 – 54
591008 | 34917 – 56
591001 | 34916 – special sizes

WAKOL Polo-Shirt



Area of application:

Fashionable polo-shirt made of 100 % cotton. Neckband, colour-contrasting button strip.

Colour:
blue

Size:
S-XL

Order information:

591619 | 36012 – S
591618 | 36011 – M
591617 | 36010 – L
591616 | 36009 – XL
591615 | 36027 – XXL
591614 | 36028 – 3XL

WAKOL T-Shirt



Area of application:

Hard-wearing T-Shirt made of 100 % ring-spun cotton, with ribbed collar, shoulder-to-shoulder neckband and double seam on sleeves and waistband for additional stability. The comfortable, soft material structure offers a pleasant wearing comfort. Logo print on breast and back.

Colour:
blue

Size:
M-2XL

Order information:

591319 | 36008 – S
591317 | 34930 – L
591318 | 34929 – M
591316 | 34928 – XL
591315 | 34927 – XXL

Trowel Notch Sizes

A good adhesive adheres even better when used with the right applicator. Below is the selected series of notch sizes determined by the Technical Commission on Construction Adhesives (TKB). Notched trowels and strips according to the uniform TKB designation are supplied by all leading tool manufacturers.



Group	Notch Profile	Notch depth mm	Notch width mm	Notch bridge width mm	Angle °
Group A					
A 1		1,1	1,5	0,5	55°
A 2		1,4	1,7	1,3	55°
Group B					
B 1		2,0	2,4	2,6	55°
B 2		2,55	3,0	2,0	55°
B 3		3,25	3,7	3,3	55°
B 5		5,15	5,7	14,3	55°
B 11		5,0	6,1	7,9	60°
B 13		6,5	7,1	11,4	55°
B 15		6,3	5,6	6,9	45°
B 5 Speciality Trowel Blade		5,15	5,7	14,3	55°
Group R					
R 2		5,0	4,0	2,0	R
R 3		5,0	6,0	2,4	U
R 4		6,0	6,0	2,4	U
Group S					
S 2		3,35	4,2	0,1	60°
Special notch sizes from Pajarito					
7		4,7	2,8	0,2	
25		3,8	5,7	0,3	

Direct installation of elastic and textile floorings on standardised or renovated subfloors

Subfloors	Cement screeds (CT) with sufficient smooth and level surface	Calcium sulfate screeds (CA) with sufficient smooth and level surface	Chipboards according to DIN EN 312 (P4 up to P7), these must be fully leveled with plasticised levelling compound or filled normally	Newly levelled subfloors with Wakol levelling compounds	Newly levelled subfloors with Wakol levelling compounds plastified with WAKOL D 3060 Plastification Additive	Gypsum fibre boards, primed with Wakol primers	WAKOL TS 102 Footfall Soundproofing Mat, 2 mm completely cover bonded WAKOL TS 103 Footfall Soundproofing Mat, 3 mm completely cover bonded WAKOL TS 112 Footfall Soundproofing Mat, 2 mm completely cover bonded
Flooring							
Specifies	Prime with D 3004 1:2 / D 3003, not suitable for wheelchairs	Prime with D 3004 1:2 / D 3003, not suitable for wheelchairs	Smooth joints and screw holes with A 830 plastified with D 3060			not suitable for wheelchairs	Please note technical information TS 102, TS 103 and TS 112
Textile flooring with TR-backing, fleece backing or latex backing	D 3270 D 3304 D 3307 D 3308 D 3310 D 3311 D 3312 D 3360	D 3270 D 3304 D 3307 D 3308 D 3310 D 3311 D 3312 D 3360	D 3270 D 3304 D 3307 D 3308 D 3310 D 3311 D 3312 D 3360	D 3270 D 3304 D 3307 D 3308 D 3310 D 3311 D 3312 D 3360	D 3270 D 3304 D 3307 D 3308 D 3310 D 3311 D 3312 D 3360	D 3270 D 3304 D 3307 D 3308 D 3310 D 3311 D 3312 D 3360	D 3270 D 3304 D 3307 D 3308 D 3310 D 3311 D 3312 D 3360
Textile flooring with synthetic fleece backing or latex backing	D 3304 D 3307 D 3308 D 3310 D 3311 D 3312 D 3360	D 3304 D 3307 D 3308 D 3310 D 3311 D 3312 D 3360	D 3304 D 3307 D 3308 D 3310 D 3311 D 3312 D 3360	D 3304 D 3307 D 3308 D 3310 D 3311 D 3312 D 3360	D 3304 D 3307 D 3308 D 3310 D 3311 D 3312 D 3360	D 3304 D 3307 D 3308 D 3310 D 3311 D 3312 D 3360	D 3304 D 3307 D 3308 D 3310 D 3311 D 3312 D 3360
Textile flooring with jute backing Textile flooring, woven	D 3307 D 3320 D 3360	D 3307 D 3320 D 3360	D 3307 D 3320 D 3360	D 3307 D 3320 D 3360	D 3307 D 3320 D 3360		D 3307 D 3320 D 3360
Textile flooring with PVC-backing	D 3304 D 3308 D 3310 D 3311 D 3312 D 3360 MS 550 MS 552	D 3304 D 3308 D 3310 D 3311 D 3312 D 3360 MS 550 MS 552	D 3304 D 3308 D 3310 D 3311 D 3312 D 3360 MS 550 MS 552	D 3304 D 3308 D 3310 D 3311 D 3312 D 3360 MS 550 MS 552	D 3304 D 3308 D 3310 D 3311 D 3312 D 3360 MS 550 MS 552	D 3304 D 3308 D 3310 D 3311 D 3312 D 3360 MS 550 MS 552	D 3304 D 3308 D 3310 D 3311 D 3312 D 3360 MS 550 MS 552
Needle fleece flooring			D 3304 D 3311 D 3318 D 3360 D 3210 MS 550 MS 552	D 3304 D 3311 D 3318 D 3360 D 3210 MS 550 MS 552	D 3304 D 3311 D 3318 D 3360 D 3210 MS 550 MS 552		D 3304*1 D 3311*1 D 3318*1 D 3360*1 MS 550*1 MS 552*1
Linoleum with jute woven backing			D 3125 D 3307 D 3316 D 3317 D 3318 D 3319 D 3320 D 3360 D 3210 MS 550 MS 552 PU 270	D 3125 D 3307 D 3316 D 3317 D 3318 D 3319 D 3320 D 3360 D 3210 MS 550 MS 552 PU 270	D 3125 D 3307 D 3316 D 3317 D 3318 D 3319 D 3320 D 3360 D 3210 MS 550 MS 552 PU 270		D 3125*1 D 3316*1 D 3317*1 D 3318*1 D 3319*1 D 3320*1 D 3360*1 MS 550*1 MS 552*1 PU 270*1
PVC flooring, homogeneous			D 3125 D 3313 D 3316 D 3316 D 3317 D 3318 D 3319 D 3320 D 3360 D 3210 MS 550 MS 552 PU 270	D 3125 D 3313 D 3316 D 3317 D 3318 D 3319 D 3320 D 3360 D 3210 MS 550 MS 552 PU 270	D 3125 D 3316 D 3317 D 3318 D 3319 D 3320 D 3360 D 3210 MS 550 MS 552 PU 270		D 3125*1 D 3316*1 D 3317*1 D 3318*1 D 3320*1 MS 550*1 MS 552*1 PU 270*1
PVC bond flooring with polyester fleece backing and CT flooring			D 3125 D 3313 D 3316 D 3317 D 3318 D 3319 D 3320 D 3360 D 3210 MS 550 MS 552 PU 270	D 3125 D 3313 D 3316 D 3317 D 3318 D 3319 D 3320 D 3360 D 3210 MS 550 MS 552 PU 270	D 3125 D 3316 D 3317 D 3318 D 3319 D 3320 D 3360 D 3210 MS 550 MS 552 PU 270		D 3125*1 D 3316*1 D 3317*1 D 3318*1 D 3319*1 D 3320*1 D 3360*1 MS 550*1 MS 552*1 PU 270*1
LVT flooring			D 3210 MS 550 MS 552 PU 270	D 3317 D 3318 D 3360 D 3210 D 3320 MS 550 MS 552 PU 270	D 3210 MS 550 MS 552 PU 270		MS 550*2 MS 552*2 PU 270*2
PVC-free flooring PU or PO base or with fleece backed			D 3313*3 D 3318*3 MS 550*3 MS 552*3 PU 270*3	D 3313*3 D 3318*3 MS 550*3 MS 552*3 PU 270*3	MS 550*3 MS 552*3 PU 270*3		MS 550*3 MS 552*3 PU 270*3

The applicable standards and fact sheets must be heeded with all laying operations as well as manufacturer's instructions.

Please note:

- *1 Pretreat surface with WAKOL A 830 Anhydrite Levelling Compound or WAKOL Z 615 Levelling Compound, dust-reduced plastified with WAKOL D 3060 Plastification Additive
- *2 Pretreat surface with WAKOL Z 615 Levelling Compound, dust-reduced plastified with WAKOL D 3060 Plastification Additive

*3 Please observe adhesive recommendation of flooring manufacturer or consult Wakol technical support

All mentioned products are very low in emissions

Subfloor preparation of non suitable subfloors for direct bonding of elastic and textile flooring according to DIN 18365

Subfloors	Preparation	Prepare	Primer Dilution	Drying time	Bonding of reinforcement / decoupling	Reinforcement / decoupling	Primer Dilution	Drying time	Levelling
Cement screeds (CT), Concrete slabs		Grind and vacuum RS 5935 or RS 5945	D 3003 or D 3004 1:2 with water	when suitable for walking					
Calcium sulfate screeds (CA)		Grind and vacuum RS 5935 or RS 5945	D 3003 or D 3004 1:2 with water	approx. 1 hour, when suitable for walking in combination with A 830 and A 885					A 830 A 885 Z 610 Z 615 Z 625 Z 630 Z 635 Z 636 Z 675 Z 680 Z 715 Z 515
Magnesite screeds (MA)		Grind and vacuum RS 5935 or RS 5945	PU 280 PU 235 MS 330	approx. 1 hour approx. 4-6 hours approx. 1 hour			D 3045	approx. 1 hour	
Mastic asphalt screeds (AS)		Grind and vacuum RS 5935 or RS 5945	D 3004 1:1 with water or D 3045	approx. 30-60 minutes					
Terrazzo, tiles		Cleaning with R 4515, RS 5935 or RS 5945	D 3004 undiluted or D 3045	approx. 30-60 minutes					
Gypsum fibre boards		Grind and vacuum RS 5935 or RS 5945	D 3003 or D 3004 1:2 with water	approx. 1 hour					A 830*1 Z 615*1 A 885*1 Z 625*1 Z 610*1 Z 630*1
Old adhesive remnants on standardised subfloors, nor as waterproof		Grind and vacuum RS 5935 or RS 5945	PU 280 PU 235 MS 330	approx. 1 hour approx. 4-6 hours approx. 1 hour					
Cement screeds (CT) with to high residual humidity up to 6 CM% / 98 % KRL without underfloor heating, up to 3 CM% / 85 % KRL with underfloor heating, concrete with to high residual humidity up to 7.5 % / 98 % KRL by weight		Grind and vacuum RS 5935 or RS 5945	PU 280 2-fold layer PU 235 2-fold layer	approx. 1 hour per layer approx. 4-6 hours per layer			D 3045	approx. 1 hour	A 830 A 885 Z 610 Z 615 Z 625 Z 630 Z 635 Z 636 Z 675 Z 680 Z 715 Z 515
Cement screeds (CT) with to high residual humidity up to 5 CM% / 95 % KRL without underfloor heating, up to 3 CM% / 85 % KRL with underfloor heating, concrete with to high residual humidity up to 7 % / 95 % KRL by weight		Grind and vacuum RS 5935 or RS 5945	MS 330	approx. 1 hour					
Cement screeds (CT), concrete with insufficient surface stability		Grind and vacuum RS 5935 or RS 5945	PU 280*2 PU 235*2 MS 330*2	approx. 1 hour approx. 4-6 hours per layer approx. 1 hour					
Cement screeds (CT) with to high residual humidity up to 5 CM% / 95 % KRL without underfloor heating, up to 3 CM% / 85 % KRL with underfloor heating		Grind and vacuum RS 5935 or RS 5945	D 3080 1:1 with water then D 3080 undiluted	at least. 30 minutes at least. 120 minutes					Z 610 Z 636 Z 615 Z 675 Z 625 Z 680 Z 630 Z 715 Z 635 Z 515
Cement screeds (CT), concrete, calcium sulfate screeds (CA), magnesite screeds (MA) or mastic asphalt screeds (AS) sufficient load-bearing but with cracks or not homogeneous (different pavings)		Grind and vacuum RS 5935 or RS 5945	PU 280 PU 235 MS 330*3	approx. 1 hour approx. 4-6 hours approx. 1 hour	MS 230 MS 290 PU 385 MS 232 MS 292 PU 215*E MS 260 MS 299 PU 216*E MS 262 PU 210 PU 220*E MS 265 PU 225	EM 140*2 RP 704*2 RP 104*2 RP 709*2 RP 107*2 RP 715*2 RP 109*2 RP 115*2			A 830 Z 630 Z 610 Z 515 Z 615 Z 625
Old, finished floors, permanent existing only tiles, wood planks, linoleum, parquet		Cleaning tiles with R 4515, sand entire surface RS 5935 or RS 5945			MS 230 MS 290 PU 225 MS 232 MS 292 PU 385 MS 260 MS 299 PU 215*E MS 262 PU 210 PU 216*E MS 265 PU 225 PU 220*E	EM 140 RP 704 RP 104 RP 709 RP 107 RP 715 RP 109 RP 115			A 830 Z 610 Z 615 Z 625 Z 630
Old, finished floors, permanent existing only tiles, wood planks, linoleum, parquet		Cleaning tiles with R 4515, sand entire surface							D 3060 + Z 645 Z 610 Z 615 Z 625 Z 630 Z 640
Installation lines to be levelled, levelling/filling of wooden floorboards and wooden beam compartments, levelling of areas with limited static load-bearing capacity (according to the planner's specifications)		Set up screed edge strips, lay out suitable foil for installation on separating layer, apply primer or bonding slurry according to substrate, WAKOL Z 590 Light Screed		24 hours			AR 150 levelled with Z 640/Z645 mixed with D 3060		Z 515 Z 610 Z 615 Z 625 Z 630 A 830

The applicable standards and fact sheets must be heeded with all laying operations.

Please note:

*1 If levelling is necessary

*2 Depending on subfloor stability, in case of doubt please consult Wakol technical support

*3 Direct installation only with MS Parquet Adhesives

*E All mentioned products are very low in emissions, except for *E

Direct installation of parquet on standardised subfloors

Subfloors	Cement screeds (CT)		Calcium sulfate screeds (CA)		Magnesia screeds (MA)		Mastic asphalt screeds (AS)		Wood-based material boards Chipboards according to DIN EN 312 (P4 up to P7) OSB according to DIN EN 300 (OSB/2 up to OSB/4)		Gypsum fibre boards, as far as parquet type is recommended for direct bonding by manufacturer	
Flooring												
Specifics							The hardness of the cast asphalt must be suitable for cementing parquets					
Prepare	Grind and vacuum D 3055 *7		Grind and vacuum D 3055 *7		Grind and vacuum		Vacuum		Vacuum		Vacuum D 3055 *7	
Mosaic parquet DIN EN 13488, edge lamella parquet DIN EN 14761	D 1640 *5 D 1690 *5 MS 230 *5 MS 232 *5 MS 260 *5 MS 261 *5 MS 262 *5 MS 265 *5 MS 290	MS 292 MS 299 PU 210 PU 225 PU 210 PU 225 PU 385 *1 PU 215 *E PU 216 *E PU 220 *E	MS 230 *5 MS 232 *5 MS 260 *5 MS 261 *5 MS 262 *5 MS 265 *5 MS 290 MS 292 MS 299	PU 210 PU 225 PU 385 *1 PU 215 *E PU 216 *E PU 220 *E	MS 230 *5 MS 232 *5 MS 260 *5 MS 261 *5 MS 262 *5 MS 265 *5 MS 290 MS 292 MS 299	PU 210 PU 225 PU 385 *1 PU 215 *E PU 216 *E PU 220 *E	MS 230 *3 *5 MS 232 *3 *5 MS 260 *3 *5 MS 261 *3 *5 MS 262 *3 *5 MS 265 *5 MS 290 MS 292 MS 299	PU 210 PU 225 PU 385 *1 *3 PU 215 *E PU 216 *E PU 220 *E	MS 230 *5 MS 232 *5 MS 260 *5 MS 261 *5 MS 262 *5 MS 265 *5 MS 290 MS 292 MS 299	PU 210 PU 225 PU 385 *1 PU 215 *E PU 216 *E PU 220 *E	MS 230 *5 MS 232 *5 MS 260 *5 MS 261 *5 MS 262 *5 MS 265 *5 MS 290 MS 292 MS 299	PU 210 PU 225 PU 385 *1 PU 215 *E PU 216 *E PU 220 *E
Strip parquet DIN EN 13226	D 1640 *2 D 1690 *5 MS 230 *6 MS 232 *6 MS 260 MS 261 MS 262 MS 265 MS 290	MS 292 MS 299 PU 210 PU 225 PU 385 PU 215 *E PU 216 *E PU 220 *E	MS 230 *6 MS 232 *6 MS 260 MS 261 MS 262 MS 265 MS 290 MS 292 MS 299	PU 210 PU 225 PU 385 PU 215 *E PU 216 *E PU 220 *E	MS 230 *6 MS 232 *6 MS 260 MS 261 MS 262 MS 265 MS 290 MS 292 MS 299	PU 210 PU 225 PU 385 PU 215 *E PU 216 *E PU 220 *E	MS 230 *3 *6 MS 232 *3 *6 MS 260 *3 MS 261 *3 MS 262 *3 MS 265 MS 290 MS 292 MS 299	PU 210 PU 225 PU 385 *3 PU 215 *E PU 216 *E PU 220 *E	MS 230 *6 MS 232 *6 MS 260 MS 261 MS 262 MS 265 MS 290 MS 292 MS 299	PU 210 PU 225 PU 385 PU 215 *E PU 216 *E PU 220 *E	MS 230 *6 MS 232 *6 MS 260 MS 261 MS 262 MS 265 MS 290 MS 292 MS 299	PU 210 PU 225 PU 385 PU 215 *E PU 216 *E PU 220 *E
Solid parquet 10 mm DIN EN 13227	MS 260 MS 261 MS 262 MS 265 MS 290 MS 292 MS 299	PU 210 PU 225 PU 215 *E PU 216 *E PU 220 *E	MS 260 MS 261 MS 262 MS 265 MS 290 MS 292 MS 299	PU 210 PU 225 PU 215 *E PU 216 *E PU 220 *E	MS 260 MS 261 MS 262 MS 265 MS 290 MS 292 MS 299	PU 210 PU 225 PU 215 *E PU 216 *E PU 220 *E	MS 260 *3 MS 261 *3 MS 262 *3 MS 265 MS 290 MS 292 MS 299	PU 210 PU 225 PU 215 *E PU 216 *E PU 220 *E	MS 260 MS 261 MS 262 MS 265 MS 290 MS 292 MS 299	PU 210 PU 225 PU 215 *E PU 216 *E PU 220 *E		
Multi-layered parquet DIN EN 13489	D 1640 D 1690 MS 228 MS 230 MS 232 MS 260 MS 261 MS 262 MS 265 MS 290 MS 292 MS 299	MS 292 MS 299 PU 210 PU 225 PU 385 PU 215 *E PU 216 *E PU 220 *E	MS 228 MS 230 MS 232 MS 260 MS 261 MS 262 MS 265 MS 290 MS 292 MS 299	PU 210 PU 225 PU 385 PU 215 *E PU 216 *E PU 220 *E	MS 228 MS 230 MS 232 MS 260 MS 261 MS 262 MS 265 MS 290 MS 292 MS 299	PU 210 PU 225 PU 385 PU 215 *E PU 216 *E PU 220 *E	MS 230 *3 MS 232 *3 MS 260 *3 MS 261 *3 MS 262 *3 MS 265 MS 290 MS 292 MS 299	PU 210 PU 225 PU 385 *3 PU 215 *E PU 216 *E PU 220 *E	MS 228 MS 230 MS 232 MS 260 MS 261 MS 262 MS 265 MS 290 MS 292 MS 299	PU 210 PU 225 PU 385 PU 215 *E PU 216 *E PU 220 *E	MS 228 MS 230 MS 232 MS 260 MS 261 MS 262 MS 265 MS 290 MS 292 MS 299	PU 210 PU 225 PU 385 PU 215 *E PU 216 *E PU 220 *E
Multi-layered parquet DIN EN 13489, 3-layer	MS 260 *4 MS 261 *4 MS 262 *4 MS 265 *4 MS 290 MS 292 MS 299	PU 210 PU 225 PU 385 PU 215 *E PU 216 *E PU 220 *E	MS 260 *4 MS 261 *4 MS 262 *4 MS 265 *4 MS 290 MS 292 MS 299	PU 210 PU 225 PU 385 PU 215 *E PU 216 *E PU 220 *E	MS 260 *4 MS 261 *4 MS 262 *4 MS 265 *4 MS 290 MS 292 MS 299	PU 210 PU 225 PU 385 PU 215 *E PU 216 *E PU 220 *E	MS 260 *3 *4 MS 261 *3 *4 MS 262 *3 *4 MS 265 MS 290 MS 292 MS 299	PU 210 PU 225 PU 385 *3 PU 215 *E PU 216 *E PU 220 *E	MS 260 *4 MS 261 *4 MS 262 *4 MS 265 *4 MS 290 MS 292 MS 299	PU 210 PU 225 PU 385 PU 215 *E PU 216 *E PU 220 *E	MS 260 *4 MS 261 *4 MS 262 *4 MS 265 *4 MS 290 MS 292 MS 299	PU 210 PU 225 PU 385 PU 215 *E PU 216 *E PU 220 *E
Solid plank DIN EN 13226 in the system with WAKOL TS 102, WAKOL TS 103 or WAKOL TS 112	MS 260 MS 261 MS 262 MS 265 MS 290 MS 292 MS 299	PU 210 PU 225 PU 385 PU 216 *E	MS 260 MS 261 MS 262 MS 265 MS 290 MS 292 MS 299	PU 210 PU 225 PU 385 PU 216 *E	MS 260 MS 261 MS 262 MS 265 MS 290 MS 292 MS 299	PU 210 PU 225 PU 385 PU 216 *E	MS 260 *3 MS 261 *3 MS 262 *3 MS 265 MS 290 MS 292 MS 299	PU 210 PU 225 PU 385 *3 PU 216 *E	MS 260 MS 261 MS 262 MS 265 MS 290 MS 292 MS 299	PU 210 PU 225 PU 216 *E PU 385		

The applicable standards and fact sheets must be heeded with all laying operations.

Please note:

*1 Only on edge lamella from 22 mm in width

*2 Only oak wood

*3 Only in combination with WAKOL PU 280 Polyurethane Primer, WAKOL PU 235 Polyurethane Primer or WAKOL MS 330 Silane Primer

*4 Up to max. 18 cm in width, oak wood up to max. 20 cm in width

*5 On edge lamella parquet from 16 mm in width, max. 200 mm in length

*6 Max. 80 mm in width, 600 mm in length

*7 If necessary

*E All mentioned products are very low in emissions, except for *E

Direct installation of parquet on renovated subfloors

Subfloors	Sufficient level and firmly attached terrazzo-, stone tiles, wood planks and parquet floors	Newly levelled subfloors with Wakol levelling compounds suitable for parquet laying	Newly levelled subfloors with cement based Wakol levelling compounds plastified with WAKOL D 3060 Plastification Additive	WAKOL PU 235 Polyurethane Primer WAKOL PU 280 Polyurethane Primer WAKOL MS 330 Silane Primer *5	WAKOL TS 102 Footfall Soundproofing Mat, 2 mm completely cover bonded WAKOL TS 103 Footfall Soundproofing Mat, 3 mm completely cover bonded WAKOL TS 112 Footfall Soundproofing Mat, 2 mm completely cover bonded	WAKOL EM 140 Uncoupling Fleece WAKOL RP 104 Decoupling Sheet, 4 mm WAKOL RP 107 Decoupling Sheet, 4 mm WAKOL RP 109 Decoupling Sheet, 9 mm WAKOL RP 115 Decoupling Sheet, 15 mm WAKOL RP 704 Project Decoupling Sheet, 4 mm WAKOL RP 709 Project Decoupling Sheet, 9 mm WAKOL RP 715 Project Decoupling Sheet, 15 mm			
Flooring									
Specifics				within 72 hours	Please note technical information TS 102, TS 103 and TS 112				
Prepare	Cleaning tiles with R 4515, sand entire surface								
Mosaic parquet DIN EN 13488, edge lamella parquet DIN EN 14761	MS 230 *6 MS 232 *6 MS 260 *6 MS 261 *6 MS 262 *6 MS 265 *6 MS 290 MS 292 MS 299	PU 210 PU 225 PU 385 *4 PU 215 *E PU 216 *E PU 220 *E	D 1640 *6 D 1690 *6 MS 230 *6 MS 232 *6 MS 260 *6 MS 261 *6 MS 262 *6 MS 265 *6 MS 290	MS 292 MS 299 PU 210 PU 225 PU 215 *E PU 385 *4 PU 216 *E PU 220 *E	MS 230 *6 MS 232 *6 MS 260 *6 MS 261 *6 MS 262 *6 MS 265 *6 MS 290 MS 292 MS 299	PU 210 PU 225 PU 385 *4 PU 215 *E PU 216 *E PU 220 *E	MS 230 *6 MS 232 *6 MS 260 *6 MS 261 *6 MS 262 *6 MS 265 *6 MS 290 MS 292 MS 299	PU 210 PU 225 PU 385 *4 PU 215 *E PU 216 *E PU 220 *E	
Strip parquet DIN EN 13226	MS 230 *2 MS 232 *2 MS 260 MS 261 MS 262 MS 265 MS 290 MS 292 MS 299	PU 210 PU 225 PU 385 PU 215 *E PU 216 *E PU 220 *E	D 1640 *1 D 1690 *1 MS 230 *2 MS 232 *2 MS 260 MS 261 MS 262 MS 265 MS 290	MS 292 MS 299 PU 210 PU 225 PU 215 *E PU 385 PU 216 *E PU 220 *E	MS 230 *2 MS 232 *2 MS 260 MS 261 MS 262 MS 265 MS 290 MS 292 MS 299	PU 210 PU 225 PU 385 PU 215 *E PU 216 *E PU 220 *E	MS 230 *2 MS 232 *2 MS 260 MS 261 MS 262 MS 265 MS 290 MS 292 MS 299	PU 210 PU 225 PU 385 PU 215 *E PU 216 *E PU 220 *E	
Solid parquet 10 mm DIN EN 13227	MS 260 MS 261 MS 262 MS 265 MS 290 MS 292 MS 299	PU 210 PU 225 PU 215 *E PU 216 *E PU 220 *E	MS 260 MS 261 MS 262 MS 265 MS 290 MS 292 MS 299	PU 210 PU 225 PU 215 *E PU 216 *E PU 220 *E	MS 260 MS 261 MS 262 MS 265 MS 290 MS 292 MS 299	PU 210 PU 225 PU 215 *E PU 216 *E PU 220 *E	MS 260 MS 261 MS 262 MS 265 MS 290 MS 292 MS 299	PU 210 PU 225 PU 215 *E PU 216 *E PU 220 *E	
Multi-layered parquet DIN EN 13489, 2-layer	MS 228 MS 230 MS 232 MS 260 MS 261 MS 262 MS 265 MS 290 MS 292	MS 299 PU 210 PU 225 PU 385 PU 215 *E PU 216 *E PU 220 *E	D 1640 D 1690 MS 228 MS 230 MS 232 MS 260 MS 261 MS 262 MS 265 MS 290	MS 292 MS 299 PU 210 PU 225 PU 215 *E PU 385 PU 216 *E PU 220 *E	MS 290 PU 210 PU 225 PU 215 *E PU 216 *E PU 220 *E	MS 228 MS 230 MS 232 MS 260 MS 261 MS 262 MS 265 MS 290 MS 292 MS 299	PU 210 PU 225 PU 385 PU 215 *E PU 216 *E PU 220 *E	MS 228 MS 230 MS 232 MS 260 MS 261 MS 262 MS 265 MS 290 MS 292 MS 299	PU 210 PU 225 PU 385 PU 215 *E PU 216 *E PU 220 *E
Multi-layered parquet DIN EN 13489, 3-layer	MS 228 MS 230 MS 232 MS 260 MS 261 MS 262 MS 265 MS 290	MS 292 MS 299 PU 210 PU 225 PU 385 PU 215 *E PU 216 *E PU 220 *E	MS 228 MS 230 MS 232 MS 260 MS 261 MS 262 MS 265 MS 290	MS 292 MS 299 PU 210 PU 225 PU 215 *E PU 385 PU 216 *E PU 220 *E	MS 290 PU 210 PU 225 PU 215 *E PU 216 *E PU 220 *E	MS 228 MS 230 MS 232 MS 260 MS 261 MS 262 MS 265 MS 290	MS 292 MS 299 PU 210 PU 225 PU 215 *E PU 385 PU 216 *E PU 220 *E	MS 228 MS 230 MS 232 MS 260 MS 261 MS 262 MS 265 MS 290	MS 292 MS 299 PU 210 PU 225 PU 215 *E PU 385 PU 216 *E PU 220 *E
Solid plank DIN EN 13226	MS 260 *3 MS 261 *3 MS 262 *3 MS 265 *3 MS 290 MS 292 MS 299	PU 210 PU 225 PU 385 PU 215 *E PU 216 *E PU 220 *E	MS 260 *3 MS 261 *3 MS 262 *3 MS 265 *3 MS 290 MS 292 MS 299	PU 210 PU 225 PU 385 PU 215 *E PU 216 *E PU 220 *E	MS 260 *3 MS 261 *3 MS 262 *3 MS 265 *3 MS 290 MS 292 MS 299	PU 210 PU 225 PU 385 PU 215 *E PU 216 *E PU 220 *E	MS 260 *3 MS 261 *3 MS 262 *3 MS 265 *3 MS 290 MS 292 MS 299	PU 210 PU 225 PU 385 PU 215 *E PU 216 *E PU 220 *E	
Wood block RE/WE DIN EN 68702 in the system with WAKOL TS 102, WAKOL TS 103 or WAKOL TS 112					MS 260 MS 261 MS 262 MS 265 MS 290 MS 292 MS 299	PU 210 PU 225 PU 385			

The applicable standards and fact sheets must be heeded with all laying operations.

Please note:

- *1 Only oak wood
- *2 Max. 80 mm in width, 600 mm in length
- *3 Up to max. 18 cm in width, oak wood up to max. 20 cm in width
- *4 Only on edge lamella from 22 mm in width

- *5 Direct installation only with MS Parquet Adhesives
- *6 On edge lamella parquet from 16 mm in width, max. 200 mm in length
- *E All mentioned products are very low in emissions, except for *E

Subfloor preparation of non suitable subfloors for direct bonding of parquet according to DIN 18356

Subfloors	Preparing	Prepare	Primer Dilution	Drying time	Bonding of reinforcement / decoupling	Reinforcement / decoupling	Primer Dilution	Drying time	Levelling	
Cement screeds (CT), concrete with insufficient levelness		Grind and vacuum RS 5935 or RS 5945	D 3003 or D 3004 1:2 with water	when suitable for walking						
Calcium sulfate screeds (CA), with insufficient levelness		Grind and vacuum RS 5935 or RS 5945	D 3003 or D 3004 1:2 with water	approx. 1 hour when suitable for walking in combination with A 830					A 830 Z 610 Z 615 Z 625 Z 630 Z 635 Z 636 Z 715 Z 515	
Magnesite screeds (MA), with insufficient levelness		Grind and vacuum RS 5935 or RS 5945	PU 280 PU 235 MS 330	approx. 1 hour approx. 4-6 hours approx. 1 hour			D 3045	approx. 1 hour		
Mastic asphalt screeds (AS), with insufficient levelness		Vacuum RS 5935 or RS 5945	D 3004 1:1 with water or D 3045	approx. 30-60 minutes						
Terrazzo, tiles with insufficient levelness		Cleaning with R 4515, RS 5935 or RS 5945	D 3004 undiluted or D 3045	approx. 30-60 minutes						
Old adhesive remnants on standardised subfloors		Grind and vacuum RS 5935 or RS 5945	PU 280 PU 235 MS 330	approx. 1 hour approx. 4-6 hours approx. 1 hour						
Cement screeds (CT) with to high residual humidity up to 6 CM% / 98 % KRL without underfloor heating, up to 3 CM% / 85 % KRL with underfloor heating, concrete with to high residual humidity up to 7.5 % / 98 % KRL by weight		Grind and vacuum RS 5935 or RS 5945	PU 280 2-fold layer PU 235 2-fold layer	approx. 1 hour per layer approx. 4-6 hours per layer					A 830 Z 610 Z 615 Z 625 Z 630 Z 635 Z 636 Z 715 Z 515	
Cement screeds (CT) with to high residual humidity up to 5 CM% / 95 % KRL without underfloor heating, up to 3 CM% / 85 % KRL with underfloor heating, concrete with to high residual humidity up to 7 % / 95 % KRL by weight		Grind and vacuum RS 5935 or RS 5945	MS 330	approx. 1 hour			D 3045	approx. 1 hour		
Cement screeds (CT), concrete with insufficient surface stability		Grind and vacuum RS 5935 or RS 5945	PU 280 *1 PU 235 *1 MS 330 *1	approx. 1 hour approx. 4-6 hours per layer approx. 1 hour						
Cement screeds (CT) with to high residual humidity up to 5 CM% / 95 % KRL without underfloor heating, up to 3 CM% / 85 % KRL with underfloor heating		Grind and vacuum RS 5935 or RS 5945	D 3080 1:1 with water then D 3080 undiluted	at least 30 minutes at least 120 minutes					A 830 Z 610 Z 615 Z 625 Z 630 Z 635 Z 715 Z 515	
Cement screeds (CT), concrete, calcium sulfate screeds (CA), magnesite screeds (MA) or mastic asphalt screeds (AS) sufficient load-bearing but with cracks or not homogeneous (different pavings)		Grind and vacuum	PU 280 PU 235 MS 330 *3	approx. 1 hour approx. 4-6 hours approx. 1 hour	MS 230 MS 232 MS 260 MS 261 MS 262 MS 265	MS 290 MS 292 MS 299 PU 210 PU 225 PU 385	PU 215 *E PU 216 *E PU 220 *E	EM 140 *1 RP 104 *1 RP 107 *1 RP 109 *1 RP 115 *1 RP 704 *1	RP 709 *1 RP 715 *1 TS 102 *1 TS 103 *1 TS 112 *1	
Gypsum fibre boards, as far as parquet type is recommended for direct bonding by manufacturer		Vacuum			MS 228 MS 230 MS 232 MS 260 MS 261 MS 262	MS 265 MS 290 MS 292 MS 299 PU 210 PU 225	PU 385 PU 215 *E PU 216 *E PU 220 *E	EM 140 RP 104 RP 107 RP 109 RP 115 RP 704	RP 709 RP 715 TS 102 TS 103 TS 112	
Permanent existing tiles, wood planks, parquet		Cleaning of tiles with R 4515, sand entire surface			MS 228 MS 230 MS 232 MS 260 MS 261 MS 262	MS 265 MS 290 MS 292 MS 299 PU 210 PU 215 *E	PU 216 *E PU 220 *E PU 225 PU 385	EM 140 RP 104 RP 107 RP 109 RP 115 RP 704	RP 709 RP 715 TS 102 TS 103 TS 112	
Permanent existing tiles, wood planks, parquet		Cleaning of tiles with R 4515, sand entire surface								Z 645 *2 Z 610 *2 Z 615 *2 Z 625 *2 Z 630 *2 Z 640 *2
Installation lines to be levelled, levelling/filling of wooden floorboards and wooden beam compartments, levelling of areas with limited static load-bearing capacity (according to the planner's specifications)		Set up screed edge strips, lay out suitable foil for installation on separating layer, apply primer or bonding slurry according to substrate, WAKOL Z 590 Light Screed		24 hours				AR 150 levelled with Z 640/Z645 mixed with D 3060		Z 515 Z 610 Z 615 Z 625 Z 630 A 830

The applicable standards and fact sheets must be heeded with all laying operations.

Please note:

*1 Depending on subfloor stability, in case of doubt please consult Wakol technical support

*2 If levelling is necessary

*3 Direct installation only with MS Parquet Adhesives

*E All mentioned products are very low in emissions, except for *E

Direct installation of cork flooring on standardised or renovated subfloors

Flooring	Subfloors	Cement screeds (CT) with sufficient smooth and level surface	Calcium sulfate screeds (CA) with sufficient smooth and level surface	Gypsum fibre boards	Wood based material boards Chipboards according to DIN EN 312 (P4 up to P7), OSB according to DIN EN 300 (OSB/2 up to OSB/4)	Newly levelled subfloors with Wakol cement based levelling compounds	WAKOL RP 104 Decoupling Sheet, 4 mm WAKOL RP 104 Decoupling Sheet, 7 mm WAKOL RP 109 Decoupling Sheet, 9 mm WAKOL RP 115 Decoupling Sheet, 15 mm WAKOL RP 704 Project Decoupling Sheet, 4 mm WAKOL RP 709 Project Decoupling Sheet, 9 mm WAKOL RP 715 Project Decoupling Sheet, 15 mm
Cork floorings with nature cork backing according to ISO 3813 respectively DIN EN 12104	MS 260 *1 MS 290 *1 MS 265 *1	MS 260 *1 MS 290 *1 MS 265 *1	MS 260 *1 MS 290 *1 MS 265 *1	MS 260 *1 MS 290 *1 MS 265 *1	D 3540 *2 MS 260 *1 MS 265 *1 MS 290 *1	D 3540 MS 260 *1 MS 265 *1 MS 290 *1	
Cork floorings with HDF/MDF middle layer and cork stabilising layer	MS 260 MS 261 MS 262 MS 265 MS 290 MS 292 MS 299 PU 385	MS 260 MS 261 MS 262 MS 265 MS 290 MS 292 MS 299 PU 385	MS 260 MS 261 MS 262 MS 265 MS 290 MS 292 MS 299 PU 385	MS 260 MS 261 MS 262 MS 265 MS 290 MS 292 MS 299 PU 385	MS 260 MS 261 MS 262 MS 265 MS 290 MS 292 MS 299 PU 385	MS 260 MS 261 MS 262 MS 265 MS 290 MS 292 MS 299 PU 385	MS 260 MS 261 MS 262 MS 265 MS 290 MS 292 MS 299 PU 385

The applicable standards and fact sheets must be heeded with all laying operations as well as manufacturer's instructions.

Please note:

*1 Flat-lying cork floorings

*2 Not on OSB

All mentioned products are very low in emissions

Subfloor preparation of non suitable subfloors for direct bonding of cork floorings according to DIN 18365

Subfloors	Preparing	Prepare	Primer Dilution	Drying time	Bonding of reinforcement / decoupling	Reinforcement / decoupling	Primer Dilution	Drying time	Levelling
Cement screeds (CT)		Grind and vacuum RS 5935 or RS 5945	D 3003 or D 3004 1:2 with water	when suitable for walking					Z 610 Z 615 Z 625 Z 630 Z 635 Z 636 Z 675 Z 680 Z 715 Z 515
Calcium sulfate screeds (CA)		Grind and vacuum RS 5935 or RS 5945	D 3003 or D 3004 1:2 with water	approx. 1 hour					
Magnesite screeds (MA)		Grind and vacuum RS 5935 or RS 5945	PU 280 PU 235 MS 330	approx. 1 hour approx. 4-6 hours approx. 1 hour			D 3045	approx. 1 hour	
Mastic asphalt screeds (AS)		Vacuum RS 5935 or RS 5945	D 3004 1:1 with water or D 3045	approx. 30-60 minutes					
Terrazzo, tiles		Cleaning with R 4515, RS 5935 or RS 5945	D 3004 undiluted or D 3045	approx. 30-60 minutes					
Gypsum fibre boards		Vacuum RS 5935 or RS 5945	D 3003 or D 3004 1:2 with water	approx. 1 hour					Z 610 Z 615 Z 625 Z 630
Old adhesive remnants on standardised subfloors, waterproof and non-waterproof		Grind and vacuum RS 5935 or RS 5945	PU 280 PU 235 MS 330	approx. 1 hour approx. 4-6 hours approx. 1 hour			D 3045	approx. 1 hour	Z 610 Z 615 Z 625 Z 630 Z 635 Z 636 Z 675 Z 680 Z 715 Z 515
Cement screeds (CT) with to high residual humidity up to 6 CM% / 98% KRL without underfloor heating, up to 3 CM% / 85% KRL with underfloor heating, concrete with to high residual humidity up to 7.5% / 98% KRL by weight		Grind and vacuum RS 5935 or RS 5945	PU 280 2-fold layer PU 235 2-fold layer	approx. 1 hour per layer approx. 4-6 hours per layer					
Cement screeds (CT) with to high residual humidity up to 5 CM% / 95% KRL without underfloor heating, up to 3 CM% / 85% KRL with underfloor heating, concrete with to high residual humidity up to 7% / 95% KRL by weight		Grind and vacuum RS 5935 or RS 5945	MS 330	approx. 1 hour					
Cement screeds (CT), concrete with insufficient surface stability		Grind and vacuum RS 5935 or RS 5945	PU 280 *1 PU 235 *1 MS 330 *1	approx. 1 hour approx. 4-6 hours approx. 1 hour					
Cement screeds (CT) with to high residual humidity up to 5 CM% / 95% KRL without underfloor heating, up to 3 CM% / 85% KRL with underfloor heating		Grind and vacuum RS 5935 or RS 5945	D 3080 1:1 with water then D 3080 undiluted	at least 30 minutes at least 120 minutes					Z 610 Z 615 Z 625 Z 630 Z 635 Z 636 Z 675 Z 680 Z 715 Z 515
Cement screeds (CT), concrete, calcium sulfate screeds (CA), magnesite screeds (MA) or mastic asphalt screeds (AS) sufficient load-bearing but with cracks or not homogeneous (different pavings)		Grind and vacuum RS 5935 or RS 5945	PU 280 PU 235 MS 330 *2	approx. 1 hour approx. 4-6 hours approx. 1 hour	MS 230 MS 232 MS 260 MS 261 MS 262 MS 265 MS 290 MS 292	MS 299 PU 210 PU 225 PU 385 PU 215 *E PU 216 *E PU 220 *E	EM 140 *1 RP 104 *1 RP 107 *1 RP 109 *1 RP 115 *1 RP 704 *1 RP 709 *1 RP 715 *1		Z 610 Z 615 Z 625 Z 630 Z 515
Old, finished floors, permanent existing only tiles, wood planks, linoleum, parquet		Cleaning tiles with R 4515, sand entire surface RS 5935 or RS 5945			MS 228 MS 230 MS 232 MS 260 MS 261 MS 262 MS 265 MS 290	MS 292 MS 299 PU 210 PU 225 PU 385 PU 215 *E PU 216 *E PU 220 *E	EM 140 RP 104 RP 107 RP 109 RP 115 RP 704 RP 709 RP 715		Z 610 Z 615 Z 625 Z 630 Z 515

The applicable standards and fact sheets must be heeded with all laying operations.

Please note:

*1 For underfloor heating please consult Wakol technical support

*2 Direct installation only with MS Parquet Adhesives

*E All mentioned products are very low in emissions, except for *E

EMICODE

EMICODE is a trademark-protected seal for product classification for modern, solvent-free and low-emission laying materials and construction products. These include, amongst others:

- Liquid products (coatings, primers, sealer- or barrier primers ready-to-use fluid fixations and adhesives, fluid sealings)
- Powdery products (cement and calcium-sulphate based levelling compounds, quick cement, screed, cement and calcium-sulphate based screed binders tile adhesive and joint mortar, mineral barrier coatings, cement and calcium-sulphate based screeds and screed binders)
- Pasty products and products with a high organic binder content (1-C or 2-C pasty flooring-, parquet and ready-to-use tile-adhesives, assembly adhesives, pasty fixations, dispersion- and reactive levelling compounds)
- Products which do not require a chemical reaction or physical drying (Underlay systems, e.g. insulating underlays, underlays with an adhesive coating, adhesive tapes, chipboards, decoupling-/insulating sheets)
- Sealing tapes and collars for small surfaces (e.g. for window, facade, in wet areas); Sealing membranes for large surfaces (e.g. for walls and floor in wet areas), vapour retarder under the roof

The inspection symbol for environmental and interior hygiene has been awarded since 1997 by the GEV (German Registered Association for the Control of Emissions in Products for Flooring Installation) to products of manufacturers who subject themselves to strict quality controls and regular inspections. With regard to consumer and processor protection, EMICODE provides an orientation aid for the assessment and selection of chemical construction products. The classification system is aimed at planners, consumers and tradesmen, is company-independent and competitively neutral.

The EMICODE breaks down into the following 3 emission classes, based on the strictly defined GEV test method (emissions test chamber) and the GEV classification criteria:

EMICODE EC1 PLUS	very low emission level PLUS
EMICODE EC1	very low emission level
EMICODE EC2	low emission level

Especially important is the best emission class, EMICODE EC1 PLUS. The TVOC thresholds for this class after 28 days are defined as follows:

EMICODE EC1 PLUS for primers, for levelling compounds and for adhesives as well as subfloors $\leq 60 \mu\text{g}/\text{m}^3$.

For details, see: www.emicode.com

Many Wakol line products correspond to the best emission class, EMICODE EC1. They are subjected to especially strict controls according to DIN EN ISO 9001:2015, from the raw material stage to manufacture, with respect to their emission characteristics as well as their superb, technical functionality.

Status 12/19

Blue Angel

The Blue Angel is awarded for different product categories in accordance with respectively adjusted inspection criteria. Laying materials are inspected in accordance with DE-UZ 113. After an external inspection of the emission characteristics and fulfilment of other conditions regarding content and container or datasheet information, the Blue Angel licence is awarded by the German Institute for Quality Assurance and Marking (RAL). Marking with the Blue Angel is voluntary. For laying materials, in accordance with DE-UZ 113 there are Blue Angel criteria for products with low VOC emissions to interior air and thus with little effect on human health. For private end consumers, it is the most widely known eco-label. The requirements of the EMICODE EC1 and of the Blue Angel are comparable. EMICODE EC1 PLUS specifies the highest requirements with regard to low-emission laying materials, www.blauer-engel.de/en/products/construction/bodenbelagsklebstoffe.

M1 Classification: Emission classification of building materials

M1 is a protected seal for product classification of low-emission building materials.

The voluntary Finnish test mark for environmental and indoor hygiene has been awarded since 1996 by the Building Information Foundation RTS to products of manufacturers who undergo strict quality controls as well as regular inspections. The aim of the classification is to promote the development and use of low-emission building materials.

The classification sets emission and odour requirements for building materials, furnishings and furniture in office and residential buildings with regard to indoor air quality. Emission and odour tests in a neutral third-party laboratory provide reliable information on the emissivity of building materials.

In the M1 classification, limit values are set for the emission and odour from the product into the indoor air. Levelling compounds must be casein-free.

Status 1/21

French VOC regulations

The French regulations on VOC emissions classes stipulate that from 1 January 2012 all construction products, flooring and wall surfaces, paints and lacquers used indoors must be marked with their emissions class. Categorisation of the emissions classes is to be on the basis of specified limit values and is the responsibility of the manufacturer. The marking on the product states the highest (worst) of the emissions classes determined for the VOCs and for the TVOC. Equivalent data on the emissions, for example from inspections for AgBB, EMICODE, Blue Angel etc. will be accepted. For details, see www.wakol.de.

TRGS 610/Regulations on hazardous substances

The German regulations on hazardous substances (GefStoffV) comprehensively regulate the categorisation, marking and handling of all kinds of hazardous substances (www.baua.de/de/Themen-von-A-Z/Gefahrstoffe/Rechtstexte/Gefahrstoffverordnung.html). The Technical Regulations on Hazardous

Substances (TRGS) define the requirements of the regulations on hazardous substances for trades. Compliance with the TRGS means the requirements of the regulations on hazardous substances are fulfilled.

The TRGS 610 Alternative materials and alternative procedures for high solvent-based primers and adhesives for floorings have been updated. In accordance with the TRGS 610, solvent-free dispersion adhesives, SMP/MS adhesives and solvent-free PU adhesives are recommended as possible alternatives.

In individual cases, the use of high solvent-based adhesives of the GISCODE Category S 0.5 (or better, such as VOC Control) may be necessary for the full bonding of parquet flooring. In event of use of these evidently less suitable alternatives, the workplace limit values and total limit values are complied with.

The full text of the TRGS 610 can be found at: www.wakol.de

GISCODE

GISCODE is a classification system agreed on in 1993 by manufacturers and German Builders' Trade Associations (GISBAU) for distinguishing product groups with certain common hazardous features. The system is exclusively geared to occupational safety and in large parts refers to the 4 product categories of the TRGS 610.

D1	solvent-free dispersion-based floor laying substances
GG60	basic cleaner, irritant (including eye damage), solvent-based with 2-butoxyethanol
RS10	Laying materials containing methoxysilane
RS20	Laying materials, primers / coatings containing methoxysilane
RU1	solvent-free polyurethane floor laying substances
S1	high solvent level floor laying substances, non-aromatic and methanol-free
CP1	Calcium sulfate based levelling compounds
ZP1	Cement-based products, low in chromate

The classification according to GISCODE, e.g. on container labels, in product information and on safety data sheets, is carried out voluntarily in particular by member companies of the adhesive industrial association „Klebstoffe e.V.“ For all GISCODE product groups the corresponding product information and sample operational instructions are available from the construction professional associations. See www.wingisonline.de

Status 12/19

CE mark

The CE mark is a producer label, stating that the product complies with a harmonised European norm. For levelling compounds this is conformity with DIN EN 13813 „Screed material and floor screeds“. Using the CE mark a high level of transparency concerning important product properties. Each CE labelled product must meet all labelled criteria. The values therefore are always minimum values. According to the European Construction Products Regulation (EU 305/2011) a Declaration of performance has to be provided by the manufacturer for each CE labelled product. The declaration of performance can be found at www.wakol.de.

Mark of conformity

The mark of conformity (Ü-Zeichen) designates laying materials that fulfil the relevant technical specifications of the building authorities. In Austria known as the „ÜA-Einbauzeichen“. General building authority approvals are granted for construction products and methods in the area of application as defined by the state building authorities. They are reliable proof of the usability of construction products. The German Institute for Building Technology (DIBt) is the German licensing authority for general building authority approvals for construction products.

For reasons of health protection, since 01.01.2011 adhesives for parquet and wooden flooring require general building authority approval for their use in habitable rooms (cf. Building Regulation List B Part 1, ser. no. 1.18.3 and Appendix 1/18.3). On 01.01.2012 approval for adhesives for floorings and underlays became a mandatory requirement.

Wheelmark

The Wheelmark is a mark of conformity valid throughout the EU, confirming suitability of the respective product for marine equipment in accordance with Council of the European Community Directive 2014/90/EU on marine equipment (EC Marine Equipment Directive – MED). To obtain this mark of conformity, a defined fire test must be passed. In addition to this EC type examination, monitoring measures carried out by an accredited body are required, e.g. a quality management system as per Module D. The support organisation for the Wheelmark is the IMO, International Maritime Organisation, an affiliate organisation of the UNO. The declaration of conformity for the corresponding products can be found at www.wakol.de.

Environmental Product Declaration, EPD

An EPD is a data set which attempts to compile all environmentally relevant information/data like resource consumption and emissions to a product over the complete product life cycle. These are approx. 100 individual data. Starting point for making an EPD is the so called ecological balance sheet, thus a systematic analysis on the environmental impact of products during their complete life cycle. This is why it is also called life cycle analysis. The basic procedure for making such product declarations is partly regulated and expressed by standardized norms, e.g. EN 15804.

In order to compile these extensive data, assumptions, average values, estimations are made according to the product division.

The ISO-Type-III-Declaration according to DIN EN ISO 14025 has been created in cooperation with the Institute for Construction and Environment (Institut für Bauen und Umwelt e.V.). With these quantitative statements about the environmental performance of building products, EPDs are also used for certification of buildings, keyword “sustainable building“. In Germany, buildings are certified for example by the DGNB (Deutsche Gesellschaft für nachhaltiges Bauen = German sustainable building council). Depending on the fulfillment of the criteria, the DGNB awards certificates in gold, silver or bronze.



For more information:

Symbols

The symbols describe the properties and applicability of the individual products:

Very low in emissions according to EMICODE EC1 PLUS	Very low in emissions according to EMICODE EC1	Emissions class i.a.w. Finnish law	Laying materials with low emissions according to DE-UZ 113
Emissions class i.a.w. French law	Classification systems in accordance with GISBAU	Solvent free according to TRGS 610	Product with VOC-Control technology
CE marking Council Directive 305/2011 EU	Emissions-tested building product in accordance with DIBt guidelines	Polish marking according to EN ISO 17178	Wheelmark Certification Council Directive 2014/90/EU
CONNECTED SYSTEMS Guarantee with Loba paints and/or oils	Suitable for underfloor heating	Suitable for wheelchairs	Conductive product

CONNECTED SYSTEMS FOR LOBA FINISHES

Connected Systems stands for harmonised system solutions from Loba and Wakol. Due to an intensive cooperation and the exchange of experiences in product development, our products go through a mutually agreed verification and validation process, which guarantees optimal security for laying.

		WAKOL																	
		1K PARQUET ADHESIVE										2K PARQUET ADHESIVE							
LOBA FINISHES	1K FINISH	EasyFinish	✓	✓				✓	✓	✓	✓	✓	✓	✓	✓	✓	✓	✓	✓
		Viva	✓	✓	✓	✓	✓	✓	✓	✓	✓	✓	✓	✓	✓	✓	✓	✓	✓
		Life	✓	✓	✓	✓	✓	✓	✓	✓	✓	✓	✓	✓	✓	✓	✓	✓	✓
	2K FINISH	2K InvisibleProtect	✓	✓	✓	✓	✓	✓	✓	✓	✓	✓	✓	✓	✓	✓	✓	✓	✓
		2K Supra	✓	✓	✓	✓	✓	✓	✓	✓	✓	✓	✓	✓	✓	✓	✓	✓	✓
		2K Duo	✓	✓	✓	✓	✓	✓	✓	✓	✓	✓	✓	✓	✓	✓	✓	✓	✓
	2K Fusion	✓	✓				✓	✓	✓	✓	✓	✓	✓	✓	✓	✓	✓	✓	

- Your advantages:**
- Exclusion of chemical reaction between finish and adhesive
 - No softening of the finish, prevents dark joints

CONNECTED SYSTEMS FOR LOBA OILS

		WAKOL																
		1K PARQUET ADHESIVE										2K PARQUET ADHESIVE						
LOBA OILS & WAXES	2K ImpactOil	✓	✓	✓	✓	✓	✓	✓	✓	✓	✓	✓	✓	✓	✓	✓	✓	✓
	2K ImpactOil Color	✓	✓	✓	✓	✓	✓	✓	✓	✓	✓	✓	✓	✓	✓	✓	✓	✓
	Akzent 100 Oil	✓	✓				✓	✓	✓	✓	✓	✓	✓	✓	✓	✓	✓	✓
	HardwaxOil EcoPlus	✓	✓				✓	✓	✓	✓	✓	✓	✓	✓	✓	✓	✓	✓
	Markant	✓	✓						✓	✓	✓	✓	✓	✓	✓	✓	✓	✓
	HardwaxOil	✓	✓						✓	✓	✓	✓	✓	✓	✓	✓	✓	✓
	MarkantColor	✓	✓						✓	✓	✓	✓	✓	✓	✓	✓	✓	✓
	HardwaxOil Nature	✓	✓						✓	✓	✓	✓	✓	✓	✓	✓	✓	✓

- Your advantages:**
- Exclusion of chemical reaction between oil and adhesive
 - Prevents dark inlets in the area of head joints

CONNECTED SYSTEMS FOR FINISHING LEVELLING COMPOUNDS

		WAKOL			
		LEVELLING COMPOUND			
LOBA	FINISH SYSTEM	FactoryBase and 2K FactoryStyle	✓	✓	✓
	OIL AND WAX SYSTEM	2K ImpactOil and Akzent 100 Wax	✓	✓	✓

- Your advantages:**
- Long-term quality control due to continuous testing when adjusting recipes
 - Reliable work within a system with comprehensive set-up recommendations and detailed step-by-step guidance



Internet link to the product

Status January 2024 | Updates can be found at www.loba.de/en and www.wakol.com. Professional use of the listed Connected Systems products is a key factor for successful results. Please take note of the respective technical data sheets of the products used.



Actual information:



D 9905603 04/24 300133004 www.mon-d.de

Wakol GmbH
Bottenbacher Str. 30
D-66954 Pirmasens
Tel. +49 6331 8001 131
Fax +49 6331 8001 890
www.wakol.com



WAKOL®
Anspruch verbindet